

**Full Moon of Cancer, fourth Full Moon of this Astrological Year, on Saturday, June 22, 2024, at 03:07:39 in Romania:**

The main Keynote or phrase to consider for all Cancer Full Moons (each year): **“I build a lighted house and therein dwell.”** The Cancer Full Moon Keynote of Light each year is: **“The Light within the form.”** (Hint 1: This is the diffused light of substance itself, the "dark light" of matter, referred to in The Secret Doctrine. Hint 2: It is the light awaiting the stimulation coming from the soul light.)”

Consider the Keynotes at, or as close to, the time of the Full Moon as possible and what it might mean as a Group. Each of the constellations also have at least one, but also as many as five, Ray determining energies by which they rule and of which they rule. **The main Ray energy of Cancer is considered to be Ray 6.** So, Cancer is considered to have main energies of Devotion or what is considered as Abstract Idealism. It is a recommendation to consider the Cancer Keynotes as Ray 6 Keynotes. This is a direct correspondence to the information of our Color Consultations and the way this same Ray determining affects us individually and in our relationship to our group. So, our Color Consultation information can be reviewed and related to each of the Full Moon determining energies to determine the possible effects and opportunities each Full Moon offers each of us personally and in relationship with the group. This was explained and expanded upon from Esoteric Astrology (EA) in general in Addendum 1 from the past Aries Full Moon report (from April 2021 – please let us know if you would like that resent to you).

This year we are adding information on how each Ray effects the constellations as fundamental hypotheses as Addendum 1 below. Cancer is the fourth sign of this new Astrological year (which started with Aries in March) and the first of the normal 9 (but this year 10) distribution and grounding energy and consciousness Full Moons of the year. It helps to begin the lower ‘anchoring’ cycle for the astrological year after the building and higher cycle of Aries, Taurus, and Gemini (March, April, May of this year). Addendum 3 from the last Aries Full Moon report (from April 2023) is some additional information on the full moons and possible meditation forms (please let us know if you need that resent to you).

Please continue to keep in mind, from the Gemini Full Moon Report (May 2024), Addendum 2 which was two papers titled, "Vision Paper: Unfolding Work for 2024-2026" by 2025 Initiative ([www.2025initiative.org](http://www.2025initiative.org)) and "More details about this proposed experiment and our groups' ideas about the unfolding opportunities of the period of 2024-2026". The addendums started with a note from us as an introduction about the papers.

Also we have worked very hard for the past few months on a new Group Correspondence Report #4 which we consider a ‘simple yet complex’ way to expand our understanding of some of a Monadic Manifestation Triangular Group’s interations and relationships and also some of the reasons for the misunderstandings that might accompany these interactions and relationships. One of the factors is explaining further the natural reason and evolution for a progressioin from individual or couples relationship with spirit to a triangular or group relationship with spirit.

Finally next month the new moons and full moons will change their order from the past year since April 2023 when the new moons began coming after the full moons and will return to having the new moon before the full moon. This should make the rest of this year’s Full Moon meditations easier.

**A. Notes on this coming First Full Moon of June/Cancer (there will be a second full moon in Cancer in July this year):**

- 1. Watch for any impressions** that may come to you before the Full Moon that may relate to the Ray 6 Keynotes and your specific Rays (from your Color Consultations), especially two days before the Full Moon, the day of the Full Moon and two days after the Full Moon. **If you want to share** any of your impressions with us please do. If you want any impressions shared with the group let us know and we will include them in the next month's meditation notes.
- 2. This is the fourth of twelve different Full Moons of this Astrological year (there will be thirteen Full Moons this year since there will be two Full moons in the sign of Cancer this year in June and July)** and is the first of the nine different (or this year ten full moons for distribution) distribution of Consciousness and Energy’ full moons of this astrological year. The energy which is built and gathered during these first three ‘Building’ Full Moons at the beginning of the astrological year, which is also called the ‘higher interlude’, will then be distributed over the last nine different Full Moons during the end of the astrological year, which is also called the ‘lower interlude’.

3. **Addendum 1 from the Full Moon report of Aries (from April 2021) gives reference into more insight and inspiration for how to** view some of the expanded awareness of these monthly and yearly Full Moon cycles as we enter into the sixth Astrological Year of this group formation and the group's beginning functioning.
4. **Addendum 1 below relates to** how each Ray effects the constellations as fundamental hypotheses.
5. **The 2024-5 astrological year Annual Keynote is,** "LET THE GROUP DEDICATE ITSELF ANEW TO THE SERVICE OF THE COMING ONE AND DO ALL IT CAN TO PREPARE HUMAN MINDS AND HEARTS FOR THAT EVENT. WE HAVE NO OTHER LIFE INTENTION."

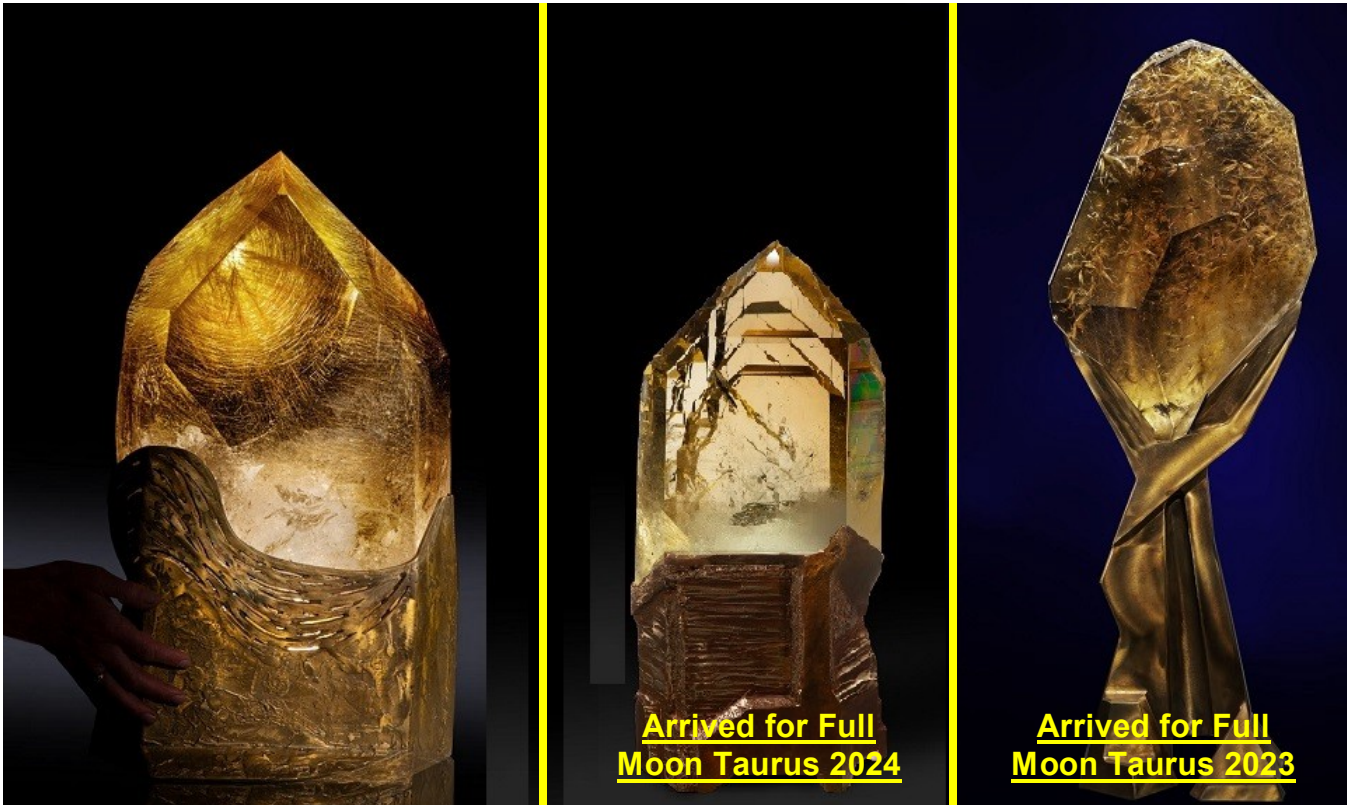
**B. Notes and Activities on or since the last Full Moon May/Gemini:**

1. **SuonAngelMiriam meditated at the time of the full moon and new moon together with Safi (when she wanted). We had what we consider** very good meditations of a continuing and culmination of building for the start of this astrological year's ending of the Higher Interlude. The second, and middle, of the Golden Light Presence of God crystals, 'Ascending Levels', we believe, mostly aligned with the Esoteric Group of Suon Virginia Remus has arrived and we are also tuning in to our respective Nirvana III<sub>1 & 2</sub> esoteric group of crystals during our meditations and sensing an increase of energy due to these crystals. We are also having more experiences during the toning and vocalizing parts of the meditations.

Part of Angel's experiences include a clear sense of increased energy, feeling the culmination of the energy building of this full moon in Gemini and how the energy is being concentrated in the crystals to be released with the Summer Solstice on June 23rd. The crystals used for meditation seemed like absorbents that absorbed energy to store it until the moment of release with the Full Moon in Cancer (next) and the Summer Solstice Puja ceremony. A transition of colors occurred during the chanting at the beginning of the meditation and a synchronization of the voices that produced an even greater increase in energy.

This past month, Leontina shared some of her recent experiences that she felt could be shared with the group. The experiences had to do with the impressions he received at different times, for no particular reason, that ended up connecting people at key moments and that led to events that possibly changed the courses of their lives, from a possible acceleration in degradation of a person's health, towards a direction towards healing, all starting from an impression that she, Leontina, should take some hemp oil to someone, again, without reason, without explanation. Along with listening to these impressions, following them and understanding their possibilities, a kind of selection, which seems natural, of the energies of the people around whom he wants to spend time began to happen. Thus, she seems to have fewer people around who would waste her time or who would not be really helpful for her, the group's projects.

2. **The Three Group Central Pillar Crystals** and the Esoteric (based on numerological 8) and Occult (based on numerological 9) crystal sub-sets are now finalized along with any rearranging of the other crystals of the over-all set for the 2025 impulse. Please let us know if you would like to explore any of these crystals or have any other input (see photo in previous FM report of Gemini of June 2022). **The three natural triple pointed crystal clusters** are always available for any group members who would like to meditate with them as another way to tune into group consciousness (see previous photo from March 2022 Pisces report). **Of three new 'Circumcentral' crystals one is still on a Lay-Away plan** to be here by the Summer Solstice of 2025 for the Hierarchical Group Impulse year of 2025. The first of the three has arrived before the past Full Moon of Taurus 2023 and the second has arrived for this full moon of Taurus 2024 (see photo below or <http://www.sam2013.org/crystals.html> on our website for more information).



3. **Poppy research at BioFarmland (BFL)** at Virginia's suggestion. Seeds from last year's wild Poppy harvest were collected and planted in last June 2023 for growing during the 2024 season. A small number of the poppies have come out this year (May 2024) and their seeds will be encouraged to spread more next year.
4. **Revised and renewed Hemp Museum suggestion** presented to Zoli, Virginia, and Leontina as a possible group project. There was similar input about local, village or household museums from the "Socio-Economico-Cultural Rebirth of the Romanian Village" conference in previous reports. Latest brief meeting was in Timisoara this spring to talk more informally about these topics.
5. **Based on Leontina's previous intentions to establish an educational location near her home further discussions are going on about** a location, financing, possible links to other hemp projects and people. An initial estimate to get a small workshop space built on her land, for materials with mainly voluntary labor or construction, is 3,000 Euros. Due to challenges encountered with the political system at her home location, Leontina has decided to stop for the moment Sopronul Cultural and the building of the dome until the environment becomes more friendly to her projects. See previous update concerning Pamantul Stramosesc in the FM 2023 Sagittarius Report from November 2023.
6. **SuonAngelMiriam have met personally with Georghie Piperea** and joined his class action law suit against the constitutionality of mandates which is moving forward as discussed in the Full Moon cover letter for Capricorn (2021). September 2022 hearing produced a change in how and who the law suit will be claiming as the defendents and the suit is continuing now at the appeal stage of litigation. The next court date has been set for late January 2024. We were notified last week that the case has been lost without further appeal and we have the details of the courts decision and are awaiting for a final brief conversation with Gheorghie Piperea after June 10, 2024. Let us know if you have additional comments or questions.
7. **SuonAngelMiriam are continuing our interaction with Katharina documenting** how to manage and implement new and better ways of herb growing, drying, processing, soil regeneration, etc.
8. **SuonAngelMiriam are interacting with Virginia on her Bio-Resonance and Herbal and Aromatherapy courses, consultations** and treatments along with the consideration of the SAM2013 Synthesise Tri-Level Color Set as liquids. Updated at meetings in September and October 2022, continuing with Virginia's Certified Herbal and Aroma Therapy courses #1 and now #2 which was in March 2023 and had another meeting at EsotericFest in June 2023 (also see Item #2 below in previous activities archive). The most recent meeting was held at EsotericFest in November 2023 with plans for the next meeting in Spring 2024 once work is completed on Color and Crystal Course educational manuals. The manuals have been completed in February 2024 and two meetings were held in March to go over more input and refinements of the process prior to a



May meeting at EsotericFest in Timisoara. In meetings since the May EsotericFest The Color Course has been approved for accrediting by ANATECOR and plans are proceeding to get further details and SAM2013 products ready for the course materials.

9. **SuonAngelMiriam are working with Remus and others on updating and expanding** one of his personal spirituality courses on Self Esteem as an Esoteric Group project. Anyone interested in knowing more or helping in this group project please let us know. Latest update was in October 2023.
10. **We participated in Remus' course about Stress Management** held through anatecor which is related to Virginia's fitotherapy course. We also attended the prayer zoom meeting he and Anatecor organized for the professor Mircea Stefea who passed recently.
11. **SuonAngelMiriam are working with Aurellian on how some of the concepts of his book and course** on "The Numerology of the Soul" might relate and correspond to the SAM2013 Synthesis Tri-Level Color System numerology. Both Aurellian and Suon have had direct contact with Yogi Bahjan who taught the numerology of the soul concepts.
12. **SuonAngelMiriam are working with Mircea on ways of distributing SAMfume** and other products and working more closely together on the other projects listed above. Recent meetings held in September Singfest and at the Singureni Christmas Fair 2022 and then in June 2023 also. The last meeting in Bucharest in March, 2024 for a brief update.

### **C. Previous Activities Archive:**

1. **Hemp** for cooperative research at BioFarmland (BFL) on hold after 3 years of testing.
2. **2023 Timisoara Cultural Capital office cooperative event named 'SAMatate'**. See FM Sagittarius 2023 for final update on this report.

### **D. General Notes and considerations about the group, cycles, meditation and information flow:**

1. **We are happy to get to know each other better**, or other ways that we may cooperate either personally, or as organizations. Please let us know if you would like any other meetings or if you have any other comments or questions.
2. **2024 continues the new seven year cycle started in 2020**. The final major group 'impact' has been made in 2019 prior to the next 100 year 'impulse' which happens during 2025.
3. **It might be considered that these Group Meditations seek** to make use of the spiritual opportunities that the cycles of full moons, solstices and equinoxes, Group Festival Weeks and Centennial Impulse years provide. The unique energies associated with each constellation, season and longer cycles are directed into the consciousness as trans-formative qualities that can lift and expand our hearts and minds.
4. **It might be considered that Group Living tends to the fulfillment of free will in service** and, as this is gradually understood, coming together to co-operate on issues for the benefit of the whole without intentions to dominate, interfere or impose on others. The vision is there, the future is assured, but the key to its successful implementation is that co-operation has to be based on intentions that are based on the good of the whole rather than a focus on self-interest.
5. **In all meditation it is of value for the student to remember that**, from the standpoint of permanent benefit, it is easier to meditate effectively during the period from the new moon to the full moon, than from the full moon to the new moon. The first half of the lunar cycle is one of intensification, absorption and accretion; the second half is one of assimilation and distribution. More real progress over a long period can be made by observing this cyclic law.
6. **Wisely utilizing newly acquired energies keeps inflowing and out flowing channels open** and prevents Sycal (psychical), Astral (emotional), Mental (intellectual) congestions, which may otherwise be experienced, with their accompanying physical consequences.
7. **The following regular monthly cycle is for the group information flow:**
  - a. Full Moon (five days): Two days before, the day of (meditation), and two days after Full Moon for getting impressions.
  - b. The week after the 5 days of the Full Moon: For letting us know or sharing of any impressions during the preceding 5 days. Plus us transcribing our own impressions.
  - c. Second week after Full Moon for 'Anchoring' or 'Grounding' impressions through gathering other information or following up on activities based on the impressions. Possible New Moon meditation by those who want and ending that Full Moon Cycle.
  - d. Third week after Full Moon (just after the New Moon): Starting to build up to the next Full Moon having any questions to impressions shared and answered and any activities based on impressions started or completed.
  - e. Fourth week after the Full Moon (just before the next Full Moon): Coming out with the Keynote and information and timing of the next Full Moon, including the shared impressions or activity from the last Full Moon.

## Addendum 1:

### Ray effects on the constellations as fundamental hypotheses from EA

(Free online at [https://www.lucistrust.org/online\\_books/esoteric\\_astrology\\_obooks](https://www.lucistrust.org/online_books/esoteric_astrology_obooks)):

#### **The Zodiac and the Rays (Continued from the last Full Moon report of Gemini):**

... As these influences pour through our planet and thence to the centres of force upon the planet, they produce a dual effect:

1. They produce an effect upon advanced man, galvanising the centres above the diaphragm into activity and enabling him to respond to the radiation and the activity of the Hierarchy.
2. They produce an effect upon unevolved man, enabling him to function as an ordinary, unenlightened human being.

It should be noted here, however, that all the energies—zodiacal, systemic, and planetary—have a definite effect upon all the lives in all forms in all kingdoms of nature. Nothing can escape these radiatory and magnetic influences. The goal of evolution for humanity is to become consciously and livingly aware of the nature of these energies and begin to know them and to use them. This is the field of occultism as the Hierarchy has always told men. It might be stated that the disciple has to become consciously aware of the planetary influences and begin to use them for the carrying out of soul purpose. The initiate has to be aware of the zodiacal influences which emanate from outside of the solar system altogether. These can be recognised as

- a. A vibration, registered in one or other of the seven centres.
- b. A revelation of a particular type of light, conveying a specific colour to the initiate.
- c. A peculiar note.
- d. A directional sound.

The whole story of the zodiac can be picturesquely yet accurately summed up in the following statement: There are three books which the three types of human beings study and from which they learn:

1. The Book of Life—Initiates—the 12 constellations.
2. The Book of Wisdom—Disciples—the 12 planets.
3. The Book of Form or of Manifestation—Humanity—the 12 Creative Hierarchies.

In summation, it might be said that:

1. The zodiacal signs affect primarily the man who lives below the diaphragm. This is the ordinary average man. These signs thus condition four of the centres:

- a. The base of the spine.
- b. The sacral centre.
- c. The solar plexus centre.
- d. The spleen.

2. The inner group of solar systems, working in conjunction with the zodiacal signs, affect primarily those who live above the diaphragm. They, therefore, condition:

- a. The heart centre.
- b. The throat centre.
- c. The ajna centre.
- d. The head centre.

3. Three of the energies work through the head centre but only after the third initiation.

There are one or two other points which might be noted here also. I note them for your enlightenment. Out of all the many energies which impinge upon, pass through and produce effects upon our planet, esoteric

astrology emphasises the following four types of force because they affect what might be called the personality of our Earth:

1. The quality of our solar system. God is a consuming fire but God is also love. This is the teaching of both esoteric and exoteric truth.
2. The quality of the Logos of our planet as it pours through the chains, the rounds, the races, and the kingdoms of nature.
3. The quality of the Earth's complementary planet, which is the Earth's polar opposite, esoterically considered. This planet is Venus.
4. The quality of the attraction of the three planets which produce an esoteric triangle of force.

I have several times used the phrase "pass through" the centres and forms. This concept necessitates the idea of distributing centres to which the incoming energies may go and from which they may pass out again as radiation. Some idea of this might be grasped if I gave you the new proposition (new to you though old to esotericists) of the centres in the human etheric body. The four centres above the diaphragm—the heart, throat, ajna and head centres—are basically and primarily receiving centres. The centres below the diaphragm—the base of the spine, the sacral, solar plexus and spleen centres—are galvanised into activity by the four higher receiving centres. This, when accomplished, demonstrates as personality and physical magnetism and influence until the time comes when there is a reversal in the way of passing—as a soul—around the zodiac. This is symbolised as the revolution of the sun around the zodiac from Aries to Pisces instead of the reverse movement, from Aries to Taurus. This is repeated in the human frame and the four lower centres eventually return that which has come to them. They thus reverse the process normally followed and the centres above the diaphragm become radio-active, dynamic and magnetic. This is an intricate occult study and is concerned with the response of the etheric body to the incoming energies. It relates finally the lowest centre at the base of the spine to the highest centre, the head centre. This is a correspondence to the relation of the Earth to the Sun. Think this out.

As we work and study over these matters, let us bear in mind always the fact that we are considering the seven rays and their inter-relations in the cosmic process. We are concerned esoterically with:

1. The seven rays and the twelve signs of the zodiac.
2. The seven rays and the twelve Creative Hierarchies.
3. The seven rays and the planets as they govern the twelve houses of expression.

As we ponder and think and as we correlate the various aspects of the teaching, we shall find three propositions emerging which govern the inflow of life to the planet and to the individual man. These have been laid down earlier in *A Treatise on the Seven Rays* but it might profit us to state them here:

Proposition One—Every ray life is an expression of a solar life and every planet is therefore:

1. Linked with every other planetary life.
2. Animated by energy pouring into it from the seven solar systems, of which ours is one.
3. Actuated by three streams of force:
  - a. Coming from solar systems other than our own.
  - b. Our own solar system.
  - c. Our own planetary life.

Proposition Two—Each one of the ray lives is the recipient and the custodian of energies coming from

1. The seven solar systems.
2. The twelve constellations.

Proposition Three—It is the quality of a ray life—manifesting in time and space—which determines the phenomenal appearance.

Before we penetrate further into the consideration of our theme, I would like to emphasise two points:

First of all, that we are considering esoteric influences and not astrology, per se. Our subject is the seven rays and their relationship to the zodiacal constellations or—in other words—the interaction of the seven great Lives which inform our solar system with the twelve constellations which compose our zodiac.

Secondly, that we have necessarily to study these energies and their interplay from the angle of their effect upon the planet, and incidentally, their effect upon the forms in the various kingdoms of nature and particularly in connection with the fourth kingdom, the human, and with individual man—average man, the disciple and the initiate.

We shall enter into no definitions in connection with technical astrology, nor shall I use the many technical terms. If, in the presentation of this vast subject, and in the process of indicating the attitude of the Ageless Wisdom to this new and coming (yet very ancient) "science of effective energies," as it has been called, I may present a new approach, or point out an unsuspected relation and from the standpoint of the Ageless Wisdom correct what are deemed errors by the Teachers on the inner side of life, I am hoping that some astrologers may be found who will be sensitive to that which is new. I am believing that there are investigators along astrological lines who will be open-minded enough to recognise possible hypotheses and then to make fair experiment with them. May I repeat: I am not writing a treatise upon astrology, but one upon the seven rays and their equivalent and corresponding energies, upon the effects of ray energy and the interplay of these energies with, and their effect upon, the various planetary forces, particularly those of the Earth. I am looking for these fair-minded astrologers to make due experiment with the factors and suggestions which I may indicate. With this in mind, let us proceed.

I have pointed out that these energies fall into three groups:

1. Those coming from certain great constellations which are to be found active in relation to our solar system and which, from the most ancient days, have always been related in myth and legend to our system. To these constellations, ours is related in a peculiar way.
2. Those coming from the twelve zodiacal constellations. These are recognised as having a definite effect upon our system and our planetary life.
3. Those coming from the planets found within the periphery of the Sun's sphere of influence.

From a certain point of view, one can generalise largely and say that these are the correspondences in the solar system to the three great centres of force which produce and control manifestation and evolutionary progress in the human being:

1. The great exterior, yet controlling, constellations are analogous to that centre of force which we call the Monad and to its universal will-to-power which is distinctive of the first divine aspect.
2. The twelve constellations might be regarded as embodying the soul aspect and, for the present, their effect upon the individual must be regarded and should be studied in terms of consciousness and of the development of the life of the soul. This is in essence the will-to-love.
3. The planets, twelve in number (seven sacred planets and five non-sacred), are effective (using the word in a technical sense) in relation to the external life, environment and circumstances of the individual. Their force contacts should be interpreted largely in terms of the human personality, the third divine aspect. They thus exemplify the will-to-know.

I would have you remember that I am talking entirely in terms of consciousness and of the responses and reactions of the individual to the forces which impinge upon him. The effect of the emanation of our planet, the Earth, is a correspondence to the effect of that aggregate of atoms and molecules which we call the dense physical body and of its response to the pull and the attraction of any or all of the subtler bodies...

**To Be Continued in the next (second this year) Full Moon report of Cancer.**

**To be considered below as closing for this Full Moon Addendum of Cancer.**

...Again and repeatedly, students must remind themselves that we are considering the impact of energy upon energy units (all qualified and producing appearance) and with the response of those energy units to the streams of force which reach them from "the furthest centre." It is in the development of response to distant points of contact and emanating sources of energy that the needed sensitivity is produced. Sensitivity, generally speaking, is of a threefold nature:

1. Sensitivity to that which is found within oneself. This, when the consciousness is adequately self-sufficient, opens a door for the entrance of energies coming from the "middle centre." I speak in symbols and for those whose knowledge of cosmic location and of points in time and space will enable them to comprehend; to the uninitiate, I simply say, "Respond to soul impact."
2. Sensitivity to that which emanates from the "centres left behind" or to those streams of vital energy which lie active and focussed below the threshold of the waking consciousness. They stir the threads of memory; they draw backward the glances (and there lies magic in the energy of the eye) of the onward moving Point, the Pilgrim on his way; they condition through ancient habit the responsiveness of the units in the form.
3. A developed sensitivity which emerges from the "furthest centre" at first unconsciously employed and later consciously directed and attuned - a fully magnetic and attractive sensitivity. Forget not that true interplay imposes the condition of reciprocity and that the two points or termini of a line eventually vibrate in unison.

The Rays pour through, are expressed by and are transmitted through the following constellations:

Ray I	Aries	Leo	Capricorn
Ray II	Gemini	Virgo	Pisces
Ray III	Cancer	Libra	Capricorn
Ray IV	Taurus	Scorpio	Sagittarius
Ray V	Leo	Sagittarius	Aquarius
Ray VI	Virgo	Sagittarius	Pisces
Ray VII	Aries	Cancer	Capricorn

**Conclusion (at this point):**

May we consider together entering into that higher state of (group/soul) 'bewilderment', especially at this cycle of Aquarian consciousness, yet strength and unity from our lower state of personal certitude and isolation to possibly obtain a universal group consciousness.