

**Second Full Moon of Cancer, fifth Full Moon of this Astrological Year, on Sunday, July 21, 2024, at 12:16:55 in Romania:**

The main Keynote or phrase to consider for all Cancer Full Moons (each year): **“I build a lighted house and therein dwell.”** The Cancer Full Moon Keynote of Light each year is: **“The Light within the form.”** (Hint 1: This is the diffused light of substance itself, the "dark light" of matter, referred to in The Secret Doctrine. Hint 2: It is the light awaiting the stimulation coming from the soul light.)”

Consider the Keynotes at, or as close to, the time of the Full Moon as possible and what it might mean as a Group. Each of the constellations also have at least one, but also as many as five, Ray determining energies by which they rule and of which they rule. **The main Ray energy of Cancer is considered to be Ray 6.** So, Cancer is considered to have main energies of Devotion or what is considered as Abstract Idealism. It is a recommendation to consider the Cancer Keynotes as Ray 6 Keynotes. This is a direct correspondence to the information of our Color Consultations and the way this same Ray determining affects us individually and in our relationship to our group. So, our Color Consultation information can be reviewed and related to each of the Full Moon determining energies to determine the possible effects and opportunities each Full Moon offers each of us personally and in relationship with the group. This was explained and expanded upon from Esoteric Astrology (EA) in general in Addendum 1 from the past Aries Full Moon report (from April 2021 – please let us know if you would like that resent to you).

This year we are adding information on how each Ray effects the constellations as fundamental hypotheses as Addendum 1 below. Cancer is the fourth different sign of this new Astrological year (which started with Aries in March) and the first of the normal 9 (but this year 10) distribution and grounding energy and consciousness Full Moons of the year. It helps to begin the lower ‘anchoring’ cycle for the astrological year after the building and higher cycle of Aries, Taurus, and Gemini (March, April, May of this year). Addendum 3 from the last Aries Full Moon report (from April 2023) is some additional information on the full moons and possible meditation forms (please let us know if you need that resent to you).

Please continue to keep in mind, from the Gemini Full Moon Report (May 2024), Addendum 2 which was two papers titled, "Vision Paper: Unfolding Work for 2024-2026" by 2025 Initiative ([www.2025initiative.org](http://www.2025initiative.org)) and "More details about this proposed experiment and our groups' ideas about the unfolding opportunities of the period of 2024-2026". The addendums started with a note from us as an introduction about the papers.

If anyone has any comments or questions on the Group Correspondence Report #4 which we consider a ‘simple yet complex’ way to expand our understanding of some of a Monadic Manifestation Triangular Group’s interations and relationships and also some of the reasons for the misunderstandings that might accompany these interactions and relationships please let us know

Finally this month the new moons and full moons changed their order from the past year since April 2023 when the new moons began coming after the full moons. Now we have returned to having the new moon before the full moon. This should make the rest of this year’s Full Moon meditations easier.

**A. Notes on this coming Second Full Moon of July/Cancer (this is the second full moon in Cancer this year):**

- 1. Watch for any impressions** that may come to you before the Full Moon that may relate to the Ray 6 Keynotes and your specific Rays (from your Color Consultations), especially two days before the Full Moon, the day of the Full Moon and two days after the Full Moon. **If you want to share** any of your impressions with us please do. If you want any impressions shared with the group let us know and we will include them in the next month’s meditation notes.
- 2. This is the fifth of twelve different Full Moons of this Astrological year (there will be thirteen Full Moons this year since there will be two Full moons in the sign of Cancer this year in June and July)** and is the second of the nine different (or this year ten full moons for distribution) distribution of Consciousness and Energy’ full moons of this astrological year. The energy which is built and gathered during these first three ‘Building’ Full Moons at the beginning of the astrological year, which is also called the ‘higher interlude’, will then be distributed over the last nine different Full Moons during the end of the astrological year, which is also called the ‘lower interlude’.
- 3. Addendum 1 from the Full Moon report of Aries (from April 2021) gives reference into more insight and inspiration for how to view some of the expanded awareness of these monthly and**

yearly Full Moon cycles as we enter into the sixth Astrological Year of this group formation and the group's beginning functioning.

4. **Addendum 1 below relates to** how each Ray effects the constellations as fundamental hypotheses.
5. **The 2024-5 astrological year Annual Keynote is,** "LET THE GROUP DEDICATE ITSELF ANEW TO THE SERVICE OF THE COMING ONE AND DO ALL IT CAN TO PREPARE HUMAN MINDS AND HEARTS FOR THAT EVENT. WE HAVE NO OTHER LIFE INTENTION."

**B. Notes and Activities on or since the last Full Moon June/Cancer 1st:**

1. **SuonAngelMiriam meditated at the time of the full moon and new moon together with Safi (when she wanted). We had what we consider** good meditations for the beginning of the grounding of consciousness cycle of the astrological year. We are also having more experiences during the toning and vocalizing parts of the meditations.

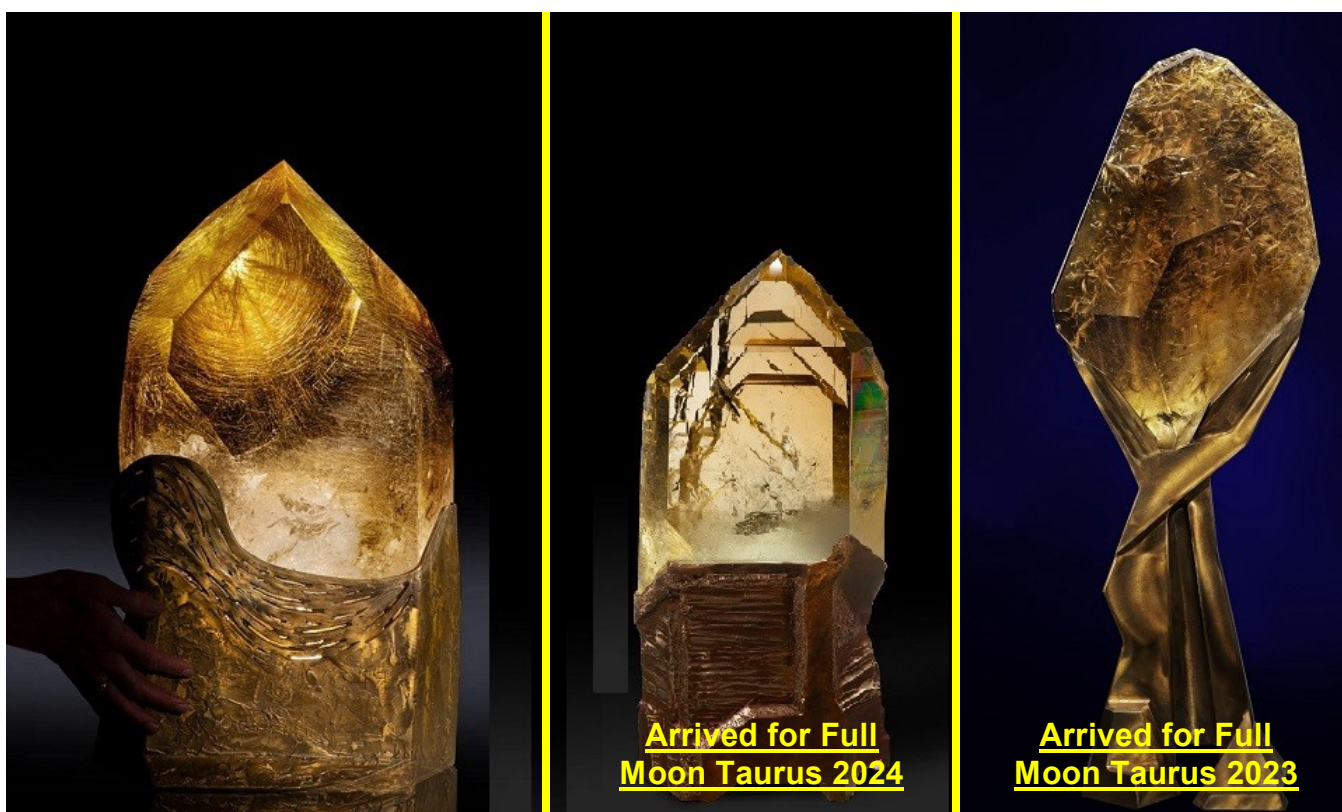
Part of Angel's experiences included a clear sense of a 'change starting tonight' during the new moon meditation.

Part of Suon's meditation had to do with the upward pointing and downward pointing double triangle parts of the masculine six pointed star and how each of the two triangles relate to the feminine five pointed star similar to some of the examples in the Group Report #4 paper that was sent out a few weeks ago. This also related to the lingam and yoni of the Hindus and the Obelisks of the Egyptians.

We also wanted to wish you a sacred Summer Solstice and offer the cleansing and nushishing of all of our and humanities Soul (Auric body in SAM terms) as a blessing. The picture below is from the main offering during the Puja ceremony this year and includes several beautiful lillies from the garden.



2. **The Three Group Central Pillar Crystals** and the Esoteric (based on numerological 8) and Occult (based on numerological 9) crystal sub-sets are now finalized along with any rearranging of the other crystals of the over-all set for the 2025 impulse. Please let us know if you would like to explore any of these crystals or have any other input (see photo in previous FM report of Gemini of June 2022). **The three natural triple pointed crystal clusters** are always available for any group members who would like to meditate with them as another way to tune into group consciousness (see previous photo from March 2022 Pisces report). **Of three new 'Circumcentral' crystals one is still on a Lay-Away plan** to be here by the Summer Solstice of 2025 for the Hierarchical Group Impulse year of 2025. The first of the three has arrived before the past Full Moon of Taurus 2023 and the second has arrived for this full moon of Taurus 2024 (see photo below or <http://www.sam2013.org/crystals.html> on our website for more information).



3. **Poppy research at BioFarmland** (BFL) at Virginia's suggestion. Seeds from last year's wild Poppy harvest were collected and planted in last June 2023 for growing during the 2024 season. A small number of the poppies have come out this year (May 2024) and their seeds will be encouraged to spread more next year.
4. **Revised and renewed Hemp Museum suggestion** presented to Zoli, Virginia, and Leontina as a possible group project. There was similar input about local, village or household museums from the "Socio-Economico-Cultural Rebirth of the Romanian Village" conference in previous reports. Latest brief meeting was in Timisoara this spring to talk more informally about these topics.
5. **Based on Leontina's previous intentions to establish an educational location near her home further discussions are going on about** a location, financing, possible links to other hemp projects and people. An initial estimate to get a small workshop space built on her land, for materials with mainly voluntary labor or construction, is 3,000 Euros. Due to challenges encountered with the political system at her home location, Leontina has decided to stop for the moment Sopronul Cultural and the building of the dome until the environment becomes more friendly to her projects. See previous update concerning Pamantul Stramosesc in the FM 2023 Sagittarius Report from November 2023.
6. **SuonAngelMiriam have met personally with Georghe Piperea** and joined his class action law suit against the constitutionality of mandates which is moving forward as discussed in the Full Moon cover letter for Capricorn (2021). September 2022 hearing produced a change in how and who the law suit will be claiming as the defendants and the suit is continuing now at the appeal stage of litigation. The next court date has been set for late January 2024. We were notified last week that the case has been lost without further appeal and we have the details of the courts decision and

are awaiting for a final brief conversation with Gheorghe Piperea after June 10, 2024. We are still waiting for a final update since George is travelling due to his new election to the EU parliament. Let us know if you have additional comments or questions.

7. **SuonAngelMiriam are continuing our interaction with Katharina documenting** how to manage and implement new and better ways of herb growing, drying, processing, soil regeneration, distilling, etc.
8. **SuonAngelMiriam are interacting with Virginia on her Bio-Resonance and Herbal and Aromatherapy courses, consultations** and treatments along with the consideration of the SAM2013 Synthesise Tri-Level Color Set as liquids. Updated at meetings in September and October 2022, continuing with Virginia's Certified Herbal and Aroma Therapy courses #1 and now #2 which was in March 2023 and had another meeting at EsotericFest in June 2023 (also see Item #2 below in previous activities archive). The most recent meeting was held at EsotericFest in November 2023 with plans for the next meeting in Spring 2024 once work is completed on Color and Crystal Course educational manuals. The manuals have been completed in February 2024 and two meetings were held in March to go over more input and refinements of the process prior to a May meeting at EsotericFest in Timisoara. In meetings since the May EsotericFest The Color Course has been approved for accrediting by ANATECOR and plans are proceeding to get further details and SAM2013 products ready for the course materials.
9. **SuonAngelMiriam are working with Remus and others on updating and expanding** one of his personal spirituality courses on Self Esteem as an Esoteric Group project. Anyone interested in knowing more or helping in this group project please let us know. Latest update was in October 2023.
10. **We participated in Remus' course about Stress Management** held through anatecor which is related to Virginia's fitotherapy course. We also attended the prayer zoom meeting he and Anatecor organized for the professor Mircea Stefea who passed recently.
11. **SuonAngelMiriam are working with Aurellian on how some of the concepts of his book and course** on "The Numerology of the Soul" might relate and correspond to the SAM2013 Synthesis Tri-Level Color System numerology. Both Aurellian and Suon have had direct contact with Yogi Bahjan who taught the numerology of the soul concepts.
12. **SuonAngelMiriam are working with Mircea on ways of distributing SAMfume** and other products and working more closely together on the other projects listed above. Recent meetings held in September Singfest and at the Singureni Christmas Fair 2022 and then in June 2023 also. The last meeting in Bucharest in March, 2024 for a brief update.

### **C. Previous Activities Archive:**

1. **Hemp** for cooperative research at BioFarmland (BFL) on hold after 3 years of testing.
2. **2023 Timisoara Cultural Capital office cooperative event named 'SAMatate'**. See FM Sagittarius 2023 for final update on this report.

### **D. General Notes and considerations about the group, cycles, meditation and information flow:**

1. **We are happy to get to know each other better**, or other ways that we may cooperate either personally, or as organizations. Please let us know if you would like any other meetings or if you have any other comments or questions.
2. **2024 continues the new seven year cycle started in 2020**. The final major group 'impact' has been made in 2019 prior to the next 100 year 'impulse' which happens during 2025.
3. **It might be considered that these Group Meditations seek** to make use of the spiritual opportunities that the cycles of full moons, solstices and equinoxes, Group Festival Weeks and Centennial Impulse years provide. The unique energies associated with each constellation, season and longer cycles are directed into the consciousness as trans-formative qualities that can lift and expand our hearts and minds.
4. **It might be considered that Group Living tends to the fulfillment of free will in service** and, as this is gradually understood, coming together to co-operate on issues for the benefit of the whole without intentions to dominate, interfere or impose on others. The vision is there, the future is assured, but the key to its successful implementation is that co-operation has to be based on intentions that are based on the good of the whole rather than a focus on self-interest.
5. **In all meditation it is of value for the student to remember that**, from the standpoint of permanent benefit, it is easier to meditate effectively during the period from the new moon to the full moon, than from the full moon to the new moon. The first half of the lunar cycle is one of intensification, absorption and accretion; the second half is one of assimilation and distribution. More real progress over a long period can be made by observing this cyclic law.
6. **Wisely utilizing newly acquired energies keeps inflowing and out flowing channels open** and prevents Sycal (psychical), Astral (emotional), Mental (intellectual) congestions, which may otherwise be experienced, with their accompanying physical consequences.

## **7. The following regular monthly cycle is for the group information flow:**

- a. Full Moon (five days): Two days before, the day of (meditation), and two days after Full Moon for getting impressions.
- b. The week after the 5 days of the Full Moon: For letting us know or sharing of any impressions during the preceding 5 days. Plus us transcribing our own impressions.
- c. Second week after Full Moon for 'Anchoring' or 'Grounding' impressions through gathering other information or following up on activities based on the impressions. Possible New Moon meditation by those who want and ending that Full Moon Cycle.
- d. Third week after Full Moon (just after the New Moon): Starting to build up to the next Full Moon having any questions to impressions shared and answered and any activities based on impressions started or completed.
- e. Fourth week after the Full Moon (just before the next Full Moon): Coming out with the Keynote and information and timing of the next Full Moon, including the shared impressions or activity from the last Full Moon.

### **Addendum 1:**

#### **Ray effects on the constellations as fundamental hypotheses from EA**

**(Free online at [https://www.lucistrust.org/online\\_books/esoteric\\_astrology\\_obooks](https://www.lucistrust.org/online_books/esoteric_astrology_obooks)):**

#### **The Zodiac and the Rays (Continued from the last Full Moon report of 1<sup>st</sup> Cancer):**

... As regards the influence of the seven solar systems, I should suggest (more I cannot do) that they are linked up astrologically with the constellations, the Great Bear, the Pleiades, and Sirius. They are intimately related to them, but their exact effect is a transmitted one and cannot be noted as producing noticeable results, as yet, upon humanity and the other kingdoms in nature. The effect of the three great constellations also cannot be noted by individual man until such time as he becomes conscious of the monadic vibration, after the third initiation. There are many potent influences playing upon our solar system and the planet all the time but—as far as man is concerned—his response apparatus and his mechanism of reaction remain what is called "occultly unresponsive," for they are not yet of a quality which will permit any noticeable recognition, either in the dense or subtler vehicles or even by the soul. Later in the evolutionary process, recognition and response will come, but for all astrological purposes and recognisable produced effects, they may be regarded today as non-existent except as they react upon the fourth kingdom of nature as it constitutes a living unit in the body of the planetary Logos. As little conscious effect is produced by these forces as the effect of a high moment of contact in your morning meditation produces an effect upon the atom or cell in the little finger upon one of your hands. There may be a general response and stimulation throughout the entire body, but the intelligent atom makes no conscious response. The vibration is of too high a character.

Speculation along these lines is profitless. A vast system of interlocking energies is in active and rapid circulation throughout the whole cosmic etheric body—of which our systemic etheric body is an integral part—but speculative research along the indicated lines and the following of obscure trails are utterly futile until the main highway of approach has been constructed and followed. The general outline of the astrological way is all that is possible today, until the time when man can think in larger wholes and has a more synthetic capacity. We shall confine ourselves to the vast field of energies which I have outlined for your consideration and shall consider only the major forces which are in circulation. This will suffice for our day and generation. We are concerned with energies which can and do evoke response and of which man can be aware and, in many cases, is today aware.

It might be useful here to comment in a wide and general way, and with many necessary reservations, upon the broad sweep of some of these responses:

1. Undeveloped humanity is primarily conditioned in its life and circumstances by the influence of the lesser zodiac and thus by the position of the planets in the twelve houses.

2. Average intelligent humanity and those nearing the Path of Discipleship and upon the Probationary Path respond consciously to

a. The planets, affecting their personalities.

b. The Sun sign, as indicating life trends which are already established and which constitute the line of least resistance.

c. The rising sign in a small measure. This indicates the life goal for that particular life cycle or else over a period of seven lives. The last two constitute the Greater Zodiac.

3. Disciples and initiates can begin consciously to respond to all the above influences, handling them constructively, plus those potent yet infinitely subtle forces which pour into our solar system from the three major constellations referred to above. In the early stages, the response is in the subtler bodies and the brain fails to register them, but after the third initiation, there is a recognition of them upon the physical plane.

Bringing the theme back to the subject of this treatise, which is that of the seven rays, I would point out that these rays have a close connection with the seven stars of the Great Bear (again always the four and the three as a secondary differentiation) and to the seven Sisters, the Pleiades. The first constellation is the agent of positive force to the planetary Logos and the other the relayer of the negative aspect. There is, therefore, a direct interchange of energies between the lives of the seven planetary Logoi and the stupendous and unfathomable Lives Who inform these major constellations. Great interlocking triangles of force can be found existing between the seven planets and these two groups of seven stars each. It will eventually be discovered that the innermost secret of astrological deduction in the planetary sense is connected with these "sacred triangles," and they are—in their turn—represented by the triangles (shifting and changing) which can be constructed in connection with the seven centres.

In casting the horoscope of the planet (which will some day be possible) it will be found that the line of these forces and of our planetary response to them is of a more potent effect than is the influence of the zodiacal constellations upon the human unit. This is due to the immeasurably advanced point in evolution of the planetary Spirits Who have (in Their individual lives) largely transcended the influence of the twelve constellations and are becoming rapidly responsive to the higher vibrations of their great Prototypes, the "three intimate constellations," as they have esoterically been called. This is a correspondence in the lives of these great Entities to the manner in which an advanced individual can offset the influence of the planets and thus so dominate his personality life that prediction and certainty, as to activity and circumstance, are no longer possible. The soul is dominating, and the planets cease to condition the life. So it is with the constellations and the planetary Logoi. They can offset the lower influences as They awaken to and respond to the infinitely higher vibrations of the three major constellations...

**To Be Continued in the next Full Moon report of Leo.**

**To be considered below as closing for this Full Moon Addendum of 2<sup>nd</sup> Cancer.**

...Again and repeatedly, students must remind themselves that we are considering the impact of energy upon energy units (all qualified and producing appearance) and with the response of those energy units to the streams of force which reach them from "the furthest centre." It is in the development of response to distant points of contact and emanating sources of energy that the needed sensitivity is produced. Sensitivity, generally speaking, is of a threefold nature:

1. Sensitivity to that which is found within oneself. This, when the consciousness is adequately self-sufficient, opens a door for the entrance of energies coming from the "middle centre." I speak in symbols and for those whose knowledge of cosmic location and of points in time and space will enable them to comprehend; to the uninitiate, I simply say, "Respond to soul impact."
2. Sensitivity to that which emanates from the "centres left behind" or to those streams of vital energy which lie active and focussed below the threshold of the waking consciousness. They stir the threads of memory; they draw backward the glances (and there lies magic in the energy of the eye) of the onward moving Point, the Pilgrim on his way; they condition through ancient habit the responsiveness of the units in the form.
3. A developed sensitivity which emerges from the "furthest centre" at first unconsciously employed and later consciously directed and attuned - a fully magnetic and attractive sensitivity. Forget not that true interplay imposes the condition of reciprocity and that the two points or termini of a line eventually vibrate in unison.

The Rays pour through, are expressed by and are transmitted through the following constellations:

Ray I	Aries	Leo	Capricorn
Ray II	Gemini	Virgo	Pisces
Ray III	Cancer	Libra	Capricorn
Ray IV	Taurus	Scorpio	Sagittarius

Ray V	Leo	Sagittarius	Aquarius
Ray VI	Virgo	Sagittarius	Pisces
Ray VII	Aries	Cancer	Capricorn

**Conclusion (at this point):**

May we consider together entering into that higher state of (group/soul) 'bewilderment', especially at this cycle of Aquarian consciousness, yet strength and unity from our lower state of personal certitude and isolation to possibly obtain a universal group consciousness.