

**Full Moon of Gemini, third Full Moon of this Astrological Year, on Thursday, May 23, 2024, at 15:52:54 in Romania:**

The main Keynote or phrase to consider for all Gemini Full Moons (each year): **“I recognise my other self and in the waning of that self, I grow and glow.”** The Gemini Full Moon Keynote of Light each year is: **“The Light of Interplay.”** (Hint 1: **This is a line of light beams, revealing that which opposes or the basic duality of manifestation, the relationship of spirit and of form.** Hint 2: **It is the conscious light of that relationship.**)” Consider the Keynotes at, or as close to, the time of the Full Moon as possible and what it might mean as a Group. Each of the constellations also have at least one, but also as many as five, Ray determining energies by which they rule and of which they rule. **The main Ray energy of Gemini is considered to be Ray 3.** So, Gemini is considered to have main energies of Intelligence and Activity or what is considered as Adaptability. It is a recommendation to consider the Gemini Keynotes as Ray 3 Keynotes. This is a direct correspondence to the information of our Color Consultations and the way this same Ray determining affects us individually and in our relationship to our group. So, our Color Consultation information can be reviewed and related to each of the Full Moon determining energies to determine the possible effects and opportunities each Full Moon offers each of us personally and in relationship with the group. This was explained and expanded upon from Esoteric Astrology (EA) in general in Addendum 1 from the past Aries Full Moon report (from April 2021 – please let us know if you would like that resent to you).

This year we are adding information on how each Ray effects the constellations as fundamental hypotheses as Addendum 1 below. Gemini is the third sign of this new Astrological year (which started with Aries in April) and the third and highest of the three building energy and consciousness Full Moons of the year. It helps bring a new, continuing, and ‘birthing’ energy to the higher building cycle for the astrological year of Aries, Taurus, and Gemini (April, May, and June). Addendum 3 from the last Aries Full Moon report (from April 2023) is some additional information on the full moons and possible meditation forms (please let us know if you need that resent to you).

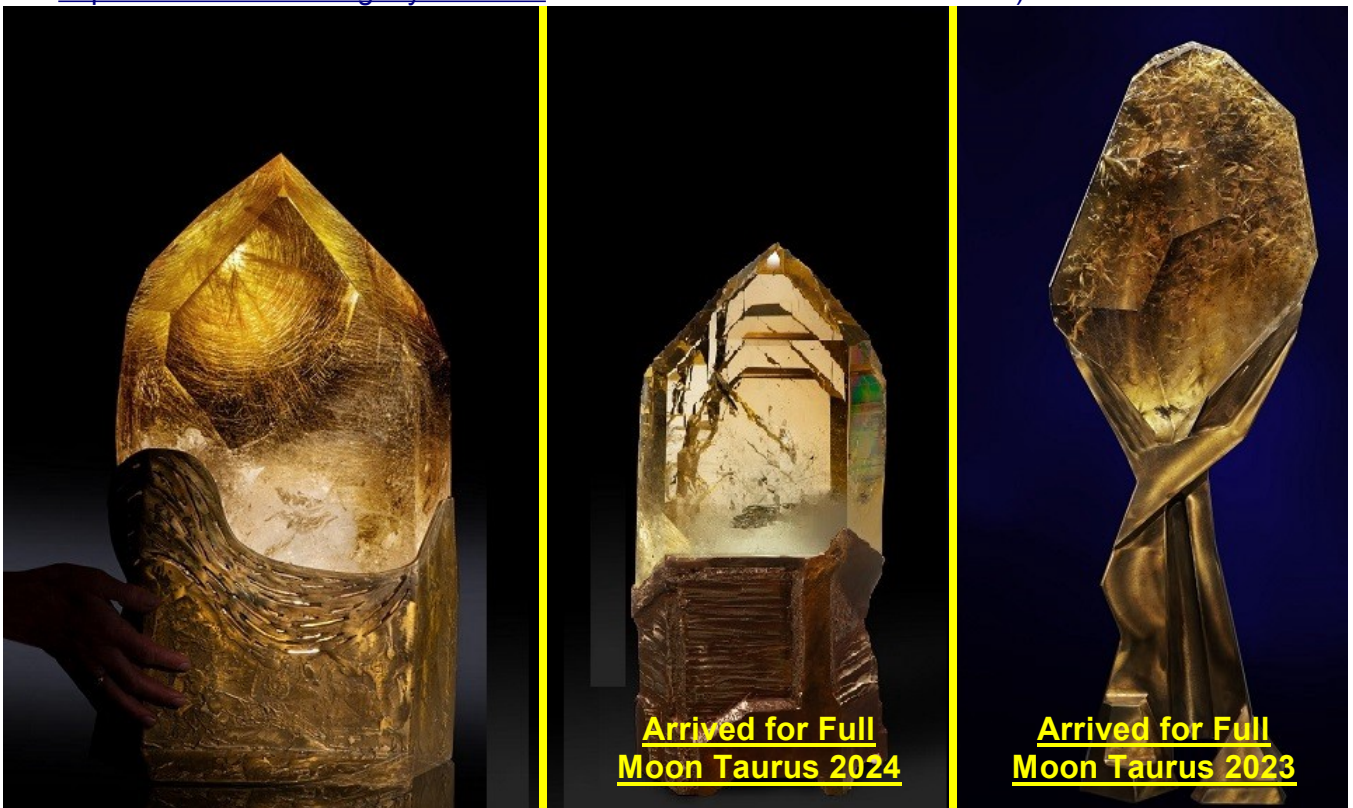
Finally we have included Addendum 2 below which is two papers titled, "Vision Paper: Unfolding Work for 2024-2026" by 2025 Initiative ([www.2025initiative.org](http://www.2025initiative.org)) and "More details about this proposed experiment and our groups' ideas about the unfolding opportunities of the period of 2024-2026". The addendum starts with a note from us as an introduction about the papers.

**A. Notes on this coming Full Moon of May/Gemini:**

- 1. Watch for any impressions** that may come to you before the Full Moon that may relate to the Ray 3 Keynotes and your specific Rays (from your Color Consultations), especially two days before the Full Moon, the day of the Full Moon and two days after the Full Moon. **If you want to share** any of your impressions with us please do. If you want any impressions shared with the group let us know and we will include them in the next month's meditation notes.
- 2. This is the third of twelve different Full Moons of this Astrological year (there will be thirteen Full Moons this year since there will be two Full moons in the sign of Cancer this year in June and July)** and is the third of the three different ‘Building Consciousness and Energy’ full moons of this astrological year. The energy which is built and gathered during these first three ‘Building’ Full Moons at the beginning of the astrological year, which is also called the ‘higher interlude’, will then be distributed over the last nine different Full Moons (or this year ten full moons for distribution) during the end of the astrological year, which is also called the ‘lower interlude’.
- 3. Addendum 1 from the Full Moon report of Aries (from April 2021) gives reference into more insight and inspiration for how to** view some of the expanded awareness of these monthly and yearly Full Moon cycles as we enter into the sixth Astrological Year of this group formation and the group's begining functioning.
- 4. Addendum 1 below relates to** how each Ray effects the constellations as fundamental hypotheses.
- 5. The 2024-5 astrological year Annual Keynote is,** “LET THE GROUP DEDICATE ITSELF ANEW TO THE SERVICE OF THE COMING ONE AND DO ALL IT CAN TO PREPARE HUMAN MINDS AND HEARTS FOR THAT EVENT. WE HAVE NO OTHER LIFE INTENTION.”

## **B. Notes and Activities on or since the last Full Moon April/Taurus:**

- 1. SuonAngelMiriam meditated at the time of the full moon and new moon together with Safi (when she wanted). We had what we consider very good meditations of a continuing beginning of the start of this astrological year's middle of the Higher Interlude.** The second, and middle, of the Golden Light Presence of God crystals, 'Ascending Levels', we believe, mostly aligned with the Esoteric Group of Suon Virginia Remus has arrived and we are also tuning in to our respective Nirvana III<sub>1&2</sub> esoteric group of crystals during our meditations and sensing an increase of energy due to these crystals. We are also having more experiences during the toning and vocalizing parts of the meditations.
- 2. The Three Group Central Pillar Crystals** and the Esoteric (based on numerological 8) and Occult (based on numerological 9) crystal sub-sets are now finalized along with any rearranging of the other crystals of the over-all set for the 2025 impulse. Please let us know if you would like to explore any of these crystals or have any other input (see photo in previous FM report of Gemini of June 2022). **The three natural triple pointed crystal clusters** are always available for any group members who would like to meditate with them as another way to tune into group consciousness (see previous photo from March 2022 Pisces report). **Of three new 'Circumcentral' crystals one is still on a Lay-Away plan** to be here by the Summer Solstice of 2025 for the Hierarchical Group Impulse year of 2025. The first of the three has arrived before the past Full Moon of Taurus 2023 and the second has arrived for this full moon of Taurus 2024 (see photo below or <http://www.sam2013.org/crystals.html> on our website for more information).



- 3. Poppy research at BioFarmland (BFL) at Virginia's suggestion.** Seeds from this year's wild Poppy harvest were collected and planted in last June 2023 for growing during the 2024 season. A small number of the poppies have come out this year (May 2024) and their seeds will be encouraged to spread more next year.
- 4. Revised and renewed Hemp Museum suggestion** presented to Zoli, Virginia, and Leontina as a possible group project. There was similar input about local, village or household museums from the "Socio-Economico-Cultural Rebirth of the Romanian Village" conference in previous reports. Latest brief meeting was in Timisoara this spring to talk more informally about these topics.
- 5. Based on Leontina's previous intentions to establish an educational location near her home further discussions are going on about** a location, financing, possible links to other hemp projects and people. An initial estimate to get a small workshop space built on her land, for materials with mainly voluntary labor or construction, is 3,000 Euros. Due to challenges encountered with the political system at her home location, Leontina has decided to stop for the moment Sopronul Cultural and the building of the dome until the environment becomes more friendly

to her projects. See previous update concerning Pamantul Stramosesc in the FM 2023 Sagittarius Report.

6. **SuonAngelMiriam have met personally with Georghe Piperea** and joined his class action law suit against the constitutionality of mandates which is moving forward as discussed in the Full Moon cover letter for Capricorn (2021). September 2022 hearing produced a change in how and who the law suit will be claiming as the defendents and the suit is continuing now at the appeal stage of litigation. The next court date has been set for late January 2024. We were notified last week that the case has been lost without further appeal and we are awaiting the details of the courts decision. Let us know if you have additional comments or questions.
7. **SuonAngelMiriam are continuing our interaction with Katharina documenting** how to manage and implement new and better ways of herb growing, drying, processing, soil regeneration, etc.
8. **SuonAngelMiriam are interacting with Virginia on her Bio-Resonance and Herbal and Aromatherapy courses, consultations** and treatments along with the consideration of the SAM2013 Synthesise Tri-Level Color Set as liquids. Updated at meetings in September and October 2022, continuing with Virginia's Certified Herbal and Aroma Therapy courses #1 and now #2 which was in March 2023 and had another meeting at EsotericFest in June 2023 (also see Item #2 below in previous activities archive). The most recent meeting was held at EsotericFest in November 2023 with plans for the next meeting in Spring 2024 once work is completed on Color and Crystal Course educational manuals. The manuals have been completed in February 2024 and two meetings were held in March to go over more input and refinements of the process prior to a May meeting at EsotericFest in Timisoara.
9. **SuonAngelMiriam are working with Remus and others on updating and expanding** one of his personal spirituality courses on Self Esteem as an Esoteric Group project. Anyone interested in knowing more or helping in this group project please let us know. Latest update was in October 2023.
10. **We participated in Remus' course about Stress Management** held through anatecor which is related to Virginia's fitotherapy course. We also attended the prayer zoom meeting he and Anatecor organized for the professor Mircea Stefea who passed recently.
11. **SuonAngelMiriam are working with Aurellian on how some of the concepts of his book and course** on "The Numerology of the Soul" might relate and correspond to the SAM2013 Synthesis Tri-Level Color System numerology. Both Aurellian and Suon have had direct contact with Yogi Bahjan who taught the numerology of the soul concepts.
12. **SuonAngelMiriam are working with Mircea on ways of distributing SAMfume** and other products and working more closely together on the other projects listed above. Recent meetings held in September Singfest and at the Singureni Christmas Fair 2022 and then in June 2023 also. The last meeting in Bucharest in March, 2024 for a brief update.

### **C. Previous Activities Archive:**

1. **Hemp** for cooperative research at BioFarmland (BFL) on hold after 3 years of testing.
2. **2023 Timisoara Cultural Capital office cooperative event named 'SAMatate'**. See FM Sagittarius 2023 for final update on this report.

### **D. General Notes and considerations about the group, cycles, meditation and information flow:**

1. **We are happy to get to know each other better**, or other ways that we may cooperate either personally, or as organizations. Please let us know if you would like any other meetings or if you have any other comments or questions.
2. **2024 continues the new seven year cycle started in 2020**. The final major group 'impact' has been made in 2019 prior to the next 100 year 'impulse' which happens during 2025.
3. **It might be considered that these Group Meditations seek** to make use of the spiritual opportunities that the cycles of full moons, solstices and equinoxes, Group Festival Weeks and Centennial Impulse years provide. The unique energies associated with each constellation, season and longer cycles are directed into the consciousness as trans-formative qualities that can lift and expand our hearts and minds.
4. **It might be considered that Group Living tends to the fulfillment of free will in service** and, as this is gradually understood, coming together to co-operate on issues for the benefit of the whole without intentions to dominate, interfere or impose on others. The vision is there, the future is assured, but the key to its successful implementation is that co-operation has to be based on intentions that are based on the good of the whole rather than a focus on self-interest.
5. **In all meditation it is of value for the student to remember that**, from the standpoint of permanent benefit, it is easier to meditate effectively during the period from the new moon to the full moon, than from the full moon to the new moon. The first half of the

lunar cycle is one of intensification, absorption and accretion; the second half is one of assimilation and distribution. More real progress over a long period can be made by observing this cyclic law.

- 6. Wisely utilizing newly acquired energies keeps inflowing and out flowing channels open** and prevents Sycal (psychical), Astral (emotional), Mental (intellectual) congestions, which may otherwise be experienced, with their accompanying physical consequences.
- 7. The following regular monthly cycle is for the group information flow:**
  - a. Full Moon (five days): Two days before, the day of (meditation), and two days after Full Moon for getting impressions.
  - b. The week after the 5 days of the Full Moon: For letting us know or sharing of any impressions during the preceding 5 days. Plus us transcribing our own impressions.
  - c. Second week after Full Moon for 'Anchoring' or 'Grounding' impressions through gathering other information or following up on activities based on the impressions. Possible New Moon meditation by those who want and ending that Full Moon Cycle.
  - d. Third week after Full Moon (just after the New Moon): Starting to build up to the next Full Moon having any questions to impressions shared and answered and any activities based on impressions started or completed.
  - e. Fourth week after the Full Moon (just before the next Full Moon): Coming out with the Keynote and information and timing of the next Full Moon, including the shared impressions or activity from the last Full Moon.

## Addendum 1:

### Ray effects on the constellations as fundamental hypotheses from EA (Free online at [https://www.lucistrust.org/online\\_books/esoteric\\_astrology\\_obooks](https://www.lucistrust.org/online_books/esoteric_astrology_obooks)):

#### **The Zodiac and the Rays (Continued from the last Full Moon report of Taurus):**

...The following attitudes and positions taken by the esoteric astrologer should also be noted:

1. That the planetary influences indicate the trend of the outer life circumstances. When correctly interpreted for the average man and for the unevolved man, they can and do indicate the personality destiny and fate; they do condition and completely control the man who has no conscious soul experience. The moment that a man becomes aware of his own soul and is endeavouring to control his own "path in life," the influence of the planets, per se, definitely weakens and steadily becomes less and less; his personality chart appears inconclusive and often most inaccurate. It is the force flowing through the planets and not the force of the planets themselves which then governs and controls. The man then becomes receptive to the subtler and higher energies of the solar system and of the twelve governing constellations.
2. That the Sun sign, as it is called, indicates the nature of the man, physical, mental and spiritual. It holds the secret of the personality ray and of the man's responsiveness or lack of responsiveness to the Soul, the real man. It indicates also the integration already achieved and the present point of unfoldment of the soul qualities, of the present available equipment, of the present life quality and of the immediately possible group relations. It indicates, from the angle of the Ageless Wisdom, nothing more. This is a reversal of the usual astrological position. The reason that I proffer this is that humanity is enough evolved so that the astrology of the soul will become possible before long; it constitutes—from many points of view—a reversal of normal procedure. This is both wise and necessary, and also inevitable. Astrologers will eventually be divided into two classes: the exoteric astrologers who will be occupied with the horoscope of the personality, and the esoteric astrologers who will be occupied with the purposes of the soul.
3. That the rising sign indicates the remoter possibilities, and the spiritual goal and purpose of the immediate incarnation and of the immediate succeeding incarnations. This sign concerns itself with the struggle of the spiritual man "to carry on" from the point achieved so that when the life energy is temporarily exhausted and the "death of the personality" takes place, the man finds himself "nearer the centre of his life, closer to the centre of his group and approaching the centre of divine life," as the Ageless Wisdom expresses it. This particular phrase "death of the personality" has two definite connotations:
  - a. It may mean the death of the physical body, which is inevitably followed by the two stages of the death of the emotional vehicle and the subsequent dissipation of the temporary and ever-changing form which the quota of mental energy has assumed during incarnation.
  - b. The subjective and mystical "death of the personality." This is a phrase indicating the transfer of the focus for the distribution of energy from the personality (a definite centre of force) to the soul (another definite centre).

I realise that these concepts are not in line with the usual astrological postulates. However, astrology would not be wasting time if it experimented with these ideas for a while. Astrologers might discover some most

interesting and arresting problems and perhaps arrive at an accuracy which is at present unknown. It might be of some service if I enlarged somewhat upon this point:

In connection with the sun sign, the rising sign and the effect of the thoughtform relating to the moon, the position of esoteric astrology is as follows:

1. The sun sign.—This sign indicates the present problem of the man; it sets the pace or the established tempo of his personality life; it is related to quality, temperament and the life tendencies which are seeking expression during this particular incarnation, and it is suggestive of the rajasic or the activity aspect of the innate man. Fundamentally, the forces here found are indicative of the line of least resistance.
2. The ascendant or rising sign indicates the intended life or immediate soul purpose for this incarnation. It holds the secret of the future and presents the force which, rightly used, will lead the man to success. It represents the sattvic or harmony aspect of life and can produce right relationship between soul and personality in any one incarnation. It thus points the way to the recognition of the force of the soul.
3. The moon.—This type of force (coming from certain planets and not from the moon) indicates that which is past. It, therefore, summarises limitation and the present handicaps. It governs the physical body and shows where the prison of the soul is to be found.

The next statement which I would like to make, and which grows normally out of the above, is that the zodiacal, the systemic and the planetary energies act either as hindering or as stimulating forces, according to the type of vehicle or body upon which they play; the nature of these vehicles and their capacity to attract, to respond, to reject, to absorb and to transmute is entirely dependent upon the point in evolution attained and also upon the general planetary condition and psychology to be found in the human family at any given time. An instance of the latter can be seen today in the world where the forces, beating in an almost violent and somewhat new measure and tempo upon our planetary life, are evoking a greatly intensified response from the world thinkers, thus stimulating them to earnest effort along ideological lines and, at the same time, are drawing forth from the masses and the little evolved people nothing but terror, a miserable fatalism, widespread physical depletion and many other undesirable reactions from the form nature. An understanding of these hindering or stimulating effects can be easily grasped by those who can comprehend the nature of the activities of the planet, Saturn. This is the planet which conditions primarily the point in evolution where choice definitely becomes possible, where rejection of opportunity or its acceptance can consciously be undertaken, and the shouldering of personal responsibility becomes a recognised fact in a planned and ordered life. This point in the human evolutionary process is spoken of in the Old Commentary in the following symbolic phrases:

"Amid the whirling forces, I stand confused. I know them not, for, during all my past, they swept me up and down the land wherein I moved, blinded and unaware. From place to place and point to point, they drove me up and down the land and nowhere was there rest.

I know them now and here I stand and will not move until I know the Law which governs all this movement up and down the land. I may revolve and turning face the many different ways; I face some wide horizons and yet today I stand.

I will determine for myself the way to go. Then onward I will move. I will not travel up and down the land nor turn in space. But onward I will move."

There is another revolutionary idea which the esoteric science of astrology brings to its modern and exoteric aspect: In the greater cycle of man's many incarnations, he—as is well recognised—passes through the zodiacal circle from Pisces to Aries, thus retrograding through the signs as he follows the sweep or path of the Sun's retrogression. This phrase has always disturbed me, but the apparent retrogression, based upon the precession of the equinoxes, is all an integral part of the Great Illusion. The moment a man begins to emerge out of that illusion and is no longer subject to the glamour and to the effect of the world maya, that moment the motion of the great Wheel of Life is reversed and he then begins (slowly and laboriously) to work in the opposite direction. He then passes through the signs from Aries to Pisces. He begins patiently and consciously to function as a soul struggling towards the light until finally he emerges at the end of the Path in Pisces as a world Victor and a world Saviour. He then knows the significance of the triumph over death because he has surmounted and overcome desire.

This reversal of the way a man travels through the signs of the zodiac will necessitate a readjustment of the method employed by astrologers when they are casting a horoscope of senior aspirants, of disciples and of initiates.

According, therefore, to an individual's point of evolution upon the Path or (in other words) the individual's place upon the wheel of life, the practising astrologer will arrange the interpretation of the horoscope. It will require the work and the thought of the intuitive astrologer, dependent upon soul contact and much meditation, to determine the processes of astrological interpretation for those who are active and living souls at some one or other of the final stages upon the Path. The casting of the horoscope of the average man or the undeveloped man presents no such difficulties.

It might be added in addition that the signs of the zodiac are concerned primarily with the life expression of the Heavenly Man (as far as our planet is concerned) and therefore with the destiny and life of the planetary Logos. They are also concerned with the great man of the heavens, the solar Logos. I refer in this last instance to their effect as it makes itself felt in the solar system as a whole and with this effect there are few astrologers at this time fit to deal. I would remind you that to the lives who inform these great constellations and whose radiation [Page 22]—dynamic and magnetic—reaches our Earth, this effect is incidental and unnoticed. The primary effect that they have is upon our planetary Logos and this effect reaches us through Him, pouring through that great planetary centre to which we have given the name of Shamballa. It is, therefore, capable of evoking the major response from the monads, and these monads express themselves through the kingdom of souls and through the human kingdom; it consequently expresses itself through the Hierarchy and through humanity as a whole. This is a point of real importance and should be noted and connected with all the teaching you have had upon this most interesting theme of the three major planetary centres. It is the work of the zodiacal influences to evoke the emergence of the will aspect of the Heavenly Man and of all monads, souls and personalities who constitute the planetary body of expression. This statement means but little to you today but it will mean much to those students who, in a few decades, will study what I am here saying. Properly understood, it accounts for much that is happening in the world at this time...

**To Be Continued in the next Full Moon report of Cancer.**

**To be considered below as closing for this Full Moon Addendum 1 of Gemini.**

...Again and repeatedly, students must remind themselves that we are considering the impact of energy upon energy units (all qualified and producing appearance) and with the response of those energy units to the streams of force which reach them from "the furthest centre." It is in the development of response to distant points of contact and emanating sources of energy that the needed sensitivity is produced. Sensitivity, generally speaking, is of a threefold nature:

1. Sensitivity to that which is found within oneself. This, when the consciousness is adequately self-sufficient, opens a door for the entrance of energies coming from the "middle centre." I speak in symbols and for those whose knowledge of cosmic location and of points in time and space will enable them to comprehend; to the uninitiate, I simply say, "Respond to soul impact."
2. Sensitivity to that which emanates from the "centres left behind" or to those streams of vital energy which lie active and focussed below the threshold of the waking consciousness. They stir the threads of memory; they draw backward the glances (and there lies magic in the energy of the eye) of the onward moving Point, the Pilgrim on his way; they condition through ancient habit the responsiveness of the units in the form.
3. A developed sensitivity which emerges from the "furthest centre" at first unconsciously employed and later consciously directed and attuned - a fully magnetic and attractive sensitivity. Forget not that true interplay imposes the condition of reciprocity and that the two points or termini of a line eventually vibrate in unison.

The Rays pour through, are expressed by and are transmitted through the following constellations:

Ray I	Aries	Leo	Capricorn
Ray II	Gemini	Virgo	Pisces
Ray III	Cancer	Libra	Capricorn
Ray IV	Taurus	Scorpio	Sagittarius

Ray V	Leo	Sagittarius	Aquarius
Ray VI	Virgo	Sagittarius	Pisces
Ray VII	Aries	Cancer	Capricorn

## **Addendum 2:**

### **1. A note from us (SAM) as an introduction about the papers.**

The following "Vision Paper: Unfolding Work for 2024-2026 (a call to esoteric groups in preparation for 2025)" and the supplemental paper "More details about this proposed experiment and our groups' ideas about the unfolding opportunities of the period of 2024-2026" are hoped to be of helpfulness in preparation for what we consider the very important years of 2024 through 2026 exoteric, esoteric, and occult meditation work.

We must remember that all of the information is written in and contains occult 'hints' and 'clues' to be meditated on, pondered about and brooded over to help experience a greater understanding of a greater reality of unity, synthesis and oneness. This experience starts within us (imminent) or from without us (transcendent) from the individual to the universal or from the universal to the individual or from the center to the periphery or from the periphery to the center, etc.

The purpose, goal or direction is the bringing together of a new group organism or entity (as illustrated in the SAM2013 symbol). This starts with our awareness of our union with Spirit or another being and the other being or Spirits' union with us and expands to our union with the next being or the next beings' union with us and so on. This can happen on seemingly a single level or on seemingly multiple levels at the same time or in single step type expansions or quantum type expansions of awareness and in certain time frames or out of any time frame.

As a general rule, in our experience, the expansion or seed union or conception or livingness starts as a first phase with a seed group directive member and then moves to a second phase seed group educative member, then to a third phase seed group instructive/activity member and then expands to esoteric group members and/or operational and functional exoteric group members and finally out to occult group members (although this may be where it all started).

Much more of this is discussed at the bottom of the SAM2013 Group Consciousness webpage in the Monadic Manifestation Full Moon Meditation reports and Monadic Manifestation Group Consciousness reports which can be downloaded as PDF files at: [http://www.sam2013.org/group\\_consciousness.html](http://www.sam2013.org/group_consciousness.html).

### **2. "Vision Paper: Unfolding Work for 2024-2026" by 2025 Initiative ([www.2025initiative.org](http://www.2025initiative.org))**

Dear friends and co-workers,

This is a call to esoteric groups in preparation for 2025.

The year 2025 is the time when the Spiritual Hierarchy will meditate and precipitate plans for humanity for the next century. This is the centennial "great download".

The world group, as the ajna center of the planet, has the opportunity and the responsibility to play a conscious role in this planetary event.

In imitation of the annual Wesak ceremony of contact, disciples of the world may use this climax point to come into alignment with each other, forming "certain geometrical shapes" to become a living "receptive lens" for the Hierarchy and a pulsating "channel of contact" for Humanity.

To be as prepared as possible we suggest practicing together in the remaining time.

We recognize that In order to manifest our innate capacity to function as conscious parts of the worldwide living organism of the World Servers Group, our groups have to become more sensitive to each other's notes and to practice skills of telepathic attunement between our groups.

Therefore we invite your group/s to join an experiment of intergroup telepathic alignment during the coming Leo-Sirius Festival on August 17-21.

We envision the participating groups keeping a conscious alignment with each other during the five days of the Leo Full Moon, while pursuing their own specific service activities. All participating groups would meet online at the beginning and at the end of the five day Full Moon period. During this period the groups will be encouraged to experiment with widening our circle of subjective contact, cultivating a finer sensitivity to each other and to the subjective energy infrastructure which we together hold.

We think of this experiment as a kind of "dress rehearsal" in preparation for next year's opportunity to be of service to Humanity and the Spiritual Hierarchy of the Planet.

We invite you to get "more details about this proposed experiment and our groups' ideas about the unfolding opportunities of the period of 2024-2026" below this call for action.

We hope this call will resonate with you. Please share this invitation within your groups. And please let us know about your intentions for further coordination.

In the Light of the One Work,

Circle of Groups:

2025 Initiative, the Blue Rose Sisterhood, the Esoteric United Nations, the Hechal Group, The Hill Center, Meditation Mount, the Morya Federation, the Northern Light Society, TPS-POP International Group (The Planetary System-Planetary Order Prototype), Sydney Goodwill, The University of the Seven Rays.

### **3. "More details about this proposed experiment and our groups' ideas about the unfolding opportunities of the period of 2024-2026".**

Vision towards the Year 2025 and Beyond:

"The ajna center of the Lord of the World is just beginning to express itself in a recognizable manner through the New Group of World Servers (NGWS). This intermediate group - between the Hierarchy and Humanity - is a carrier of the energy which makes the Plan possible (the Plan of which the Hierarchy is the custodian). This Plan implements the Purpose, and later, when the New Group of World Servers is organized and is recognized as a living organism, it will definitely receive energy from Shamballa in a direct reception, via the Hierarchy."

Rays and Initiations, by Alice A. Bailey (AAB), p 368.

The year 2025 opens a new hundred year cycle. It is the time when the Spiritual Hierarchy will convene to evaluate the state of the world and based on this evaluation, precipitate plans for humanity for the next century. The year 2025 has been the signpost towards which many spiritual students have been working and preparing for decades. It is now well-nigh upon us.

Self-organization and self-recognition of the World Servers Group as a Living Organism is now the zeitgeist of our times sensed by many groups around the world. Together we are in the process of taking up our function as the Planetary Ajna Center, becoming the One Planetary Server.

Each of our groups can be perceived as an energy vortex dedicated to a specific purpose. Each group establishes their own rhythm and method of work, and their own alignment to Hierarchy. Thus each group strives to the best of their capacity to become an ashramic outpost on the physical plane manifesting a specific hierarchical quality and function.

Through our growing awareness of each other we realize the relations between our groups as energy lines that bring us together into functional unity, forming constellations of groups. This development could be recognized as a part of the process of geometrical alignment in preparation for 2025, perhaps similar to the geometrical alignments which the Hierarchy performs annually at the time of the Wesak.

The Opportunity of Cycles:



Students of DK's Teachings (HPBs Secret Doctrine books, and AABs 24 Books) are in a position of privileged responsibility, through our knowledge of the opportunity of cycles. For decades we have been pacing our work rhythm according to the Moon cycle, streamlining our activities around the Full Moon and New Moon.

There is a growing recognition and utilization of the potency and importance of the four-beat planetary cycle of Solstices and Equinoxes. It is a unifying rhythm linked to the cycles of our planet that brings people from different traditions and cultures into synchronized celebration of our Mother Earth in relation to our Planetary Logos' Breath.

Seven years is the cycle of Uranus going through each zodiac sign. The full cycle of Uranus is 84 years. The fact of the New Group of World Servers (NGWS) was declared in the lead up to the Festival Week of 1935 when Uranus entered into Taurus (the very sign ruling the NGWS, the planetary Ajna Center). Thus the Festival Week of 2019 marked the full cycle of Uranus coming back to the same sign and marking the beginning of the new cycle of the New Group of World Servers.

Through the law of analogy we can relate the seven year cycle to the Seven Rays. Thus in the flow of the current seven year cycle we are in the fifth year (2024) which could be related to the Fifth Ray. This invites us to mentally process and fix our structural relations and the work ahead of us.

In order to utilize the opportunity of the year 2025 ahead of us, we are invited now to stretch our capacity to span a one hundred year cycle.

And in fact we do have the collective knowledge and learned experiences of the last hundred years: the Blue Books provide us with the interpretation of the world events between the Shamballa impact of 1925 until the middle of the last century. And in our own discipleship lives we are witness to the second part of the same great cycle - the period of manifestation.

Thus we span the full 100 years cycle in our consciousness and are therefore uniquely equipped to step into the position of the "planetary lens", holding the planetary coordinates of space and time for the planetary consciousness as the Plan for the next 100 years will be precipitated.

As we approach this last stretch, we are invited to make concerted use of our knowledge and experience of cycles - to hone our alignment, forming "certain geometrical shapes" to create a "receptive lens" for the Hierarchy and a "channel of contact" for humanity.

Every Full Moon and New Moon become now even more significant opportunities for knitting the world group and Hierarchy closer together.

As we journey towards the end of the current seven year cycle, we will have to invoke and utilize the potency of this cycle with its every beat in order to mobilize the entirety of the New Group of World Servers towards the beneficent opportunity of the Festival of Impact that will be inaugurated with the Capricorn Solstice of 2026.

From our present perspective at the beginning of the 2024 annual cycle, some of the coming cyclic events stand out especially as significant milestones for the World Group in its process of self-organizing and recognizing itself as a living organism:

The period between the Aries Equinox and the Wesak Festival of 2024 is colored by the potent conjunction of two rulers of Aquarius - Jupiter and Uranus - in the sign of Taurus, which rules the New Group of World Servers. On March 14 was the heliocentric conjunction and on April 21st is the geocentric conjunction. We know that the orbs of the astrological influences of Jupiter and Uranus are wide and thus the whole period of the higher interlude is conditioned by this powerful impulse of illumination of the planetary Eye (NGWS), stimulating clarity of vision of the unfolding Divine Plan. It is the time when the Eye is stimulated to be opened.

The Cancer Solstice of 2024 will be augmented by the energy of the Direct Sun (full moon). It is therefore an opportunity to impact the World Group consciousness. We invite the community to use every opportunity of each Solstice towards the Festival Week in 2026 to focus on clear communication to the wider non-

esoteric community of the fact of the NGWS as the group formed by inner recognition of the unity of purpose and shared motivation to serve the planet.

We recognize the coming Sirius-Leo Festival of 2024 as a special opportunity for the world esoteric community, for groups, to experiment with self-organizing within the great mandala of the World Servers Group.

The Leo Solar Festival is related to Sirius and, as we have been told, it will play a primary role in the future World Religion. As is the case with any opposite signs, Leo and Aquarius are an expression of the same energy. The energy interplay of these two signs will condition the incoming age, and color the evolutionary dynamic of consciousness unfoldment in individuals, groups and humanity as a whole. The higher octave of the Leo potency provides an opportunity of expansion of group consciousness and therefore can be capitalized on by practicing esoteric groups.

Leo's direct connection to Sirius, the Star of Sensitivity, provides us with the opportunity to expand our individual groups' sensitivity, recognizing the notes of other groups as well as developing a felt sense of the World Group as a Living Functioning Organism. We think of this experiment as a kind of "dress rehearsal" in preparation for next year's opportunity to serve Humanity and the Spiritual Hierarchy as "One Planetary Server".

December 2024 Solstice will be the Gate through which humanity will enter the year 2025. By that time groups are called to take their position within the mandala of the World Group, clearly sounding their notes while holding the recognition of the Living Organism of the World Group, of which they are a part.

Every Solar Festival of 2025 will be the time for groups to stand together as part of a Living Organism of the World Servers Group focused within the Planetary Ajna. It will be the time to withstand the tension of the incoming energies, and to receive, hold and distribute them within the planetary network of Light. This is of special importance considering the possibility of another direct Shamballic impact in 2025. We must remember the warning that the energy of the Will can be handled safely only in group formation and not individually.

The Cancer Solstice of 2026 will be an important moment to reach out to as many groups and organizations that share the same purpose of serving humanity on its evolutionary path. It will be the time to call all those groups to prepare for the beneficent opportunity of the Festival week in December 2026, scheduling their conferences, workshops, retreats, seeding and magnetizing their service activities for the next seven years cycle of 2027 through 2033.

We invite groups who resonate with these cyclic opportunities to come into closer cooperation. Within the emerging organic structure of the World Group let us learn together optimal ways to function as an organism of One Planetary Server, the Ajna center of the planet. Some practices have already emerged and proven effective. Others start to be sensed on the periphery of the group perception. There are many more that are still to be intuited and manifested. We learn by doing - "The Initiate knows because he works."

This vision paper is the yield from a series of reflective meditations in several groups' circles during the period between Libra 2023 and Aries 2024.

Please share it with your peers in your group and your partner groups. We would appreciate your input. Each group adds a puzzle piece to contribute to the Vision of the unfolding Plan.

Aries Equinox 2024.  
2025 Initiative ([www.2025initiative.org](http://www.2025initiative.org))

### **Conclusion (at this point):**

May we consider together entering into that higher state of (group/soul) 'bewilderment', especially at this cycle of Aquarian consciousness, yet strength and unity from our lower state of personal certitude and isolation to possibly obtain a universal group consciousness.