

**Full Moon of Libra, eighth Full Moon of this Astrological Year, on Thursday, October 17, 2024, at 13:26:10 in Romania:**

The main Keynote or phrase to consider for all Libra Full Moons (each year): **“I choose the way which leads between the two great lines of force.”** The Libra Full Moon Keynote of Light each year is: **“The Light that moves to rest.”** **“(Hint: This is the light that oscillates until a point of balance is achieved. It is the light which is distinguished by a moving up and down.)”** Consider the Keynotes at, or as close to, the time of the Full Moon as possible and what it might mean as a Group. Each of the constellations also have at least one, but also as many as five, Ray determining energies by which they rule and of which they rule. **The main Ray energy of Libra is considered to be Ray 3.** So, Libra is considered to have main energies of Active Intelligence or what is considered as Knowledge. It is a recommendation to consider the Libra Keynotes as Ray 3 Keynotes. This is a direct correspondence to the information of our Color Consultations and the way this same Ray determining affects us individually and in our relationship to our group. So, our Color Consultation information can be reviewed and related to each of the Full Moon determining energies to determine the possible effects and opportunities each Full Moon offers each of us personally and in relationship with the group. This was explained and expanded upon from Esoteric Astrology (EA) in general in Addendum 1 from the past Aries Full Moon report (from April 2021 – please let us know if you would like that resent to you or it can be downloaded from the website at the bottom of the page at: [www.sam2013.org/group\\_consciousness.html](http://www.sam2013.org/group_consciousness.html)).

This year we are adding information on how each Ray effects the constellations as fundamental hypotheses as Addendum 1 below. Libra is the seventh different sign of this new Astrological year (which started with Aries in March) and the fourth of the normal 9 (but this year 10) distribution and grounding energy and consciousness Full Moons of the year. It helps to continue the lower ‘anchoring’ cycle for the astrological year after the building and higher cycle of Aries, Taurus, and Gemini (March, April, May of this year). Addendum 3 from the last Aries Full Moon report (from April 2023) is some additional information on the full moons and possible meditation forms (please let us know if you need that resent to you or it can be downloaded from the website at the bottom of the page at: [www.sam2013.org/group\\_consciousness.html](http://www.sam2013.org/group_consciousness.html)).

Please continue to keep in mind, from the Gemini Full Moon Report (May 2024), Addendum 2 which was two papers titled, "Vision Paper: Unfolding Work for 2024-2026" by 2025 Initiative ([www.2025initiative.org](http://www.2025initiative.org)) and "More details about this proposed experiment and our groups' ideas about the unfolding opportunities of the period of 2024-2026". The addendums started with a note from us as an introduction about the papers and can also be found on the website at the bottom of the page at: [www.sam2013.org/group\\_consciousness.html](http://www.sam2013.org/group_consciousness.html).

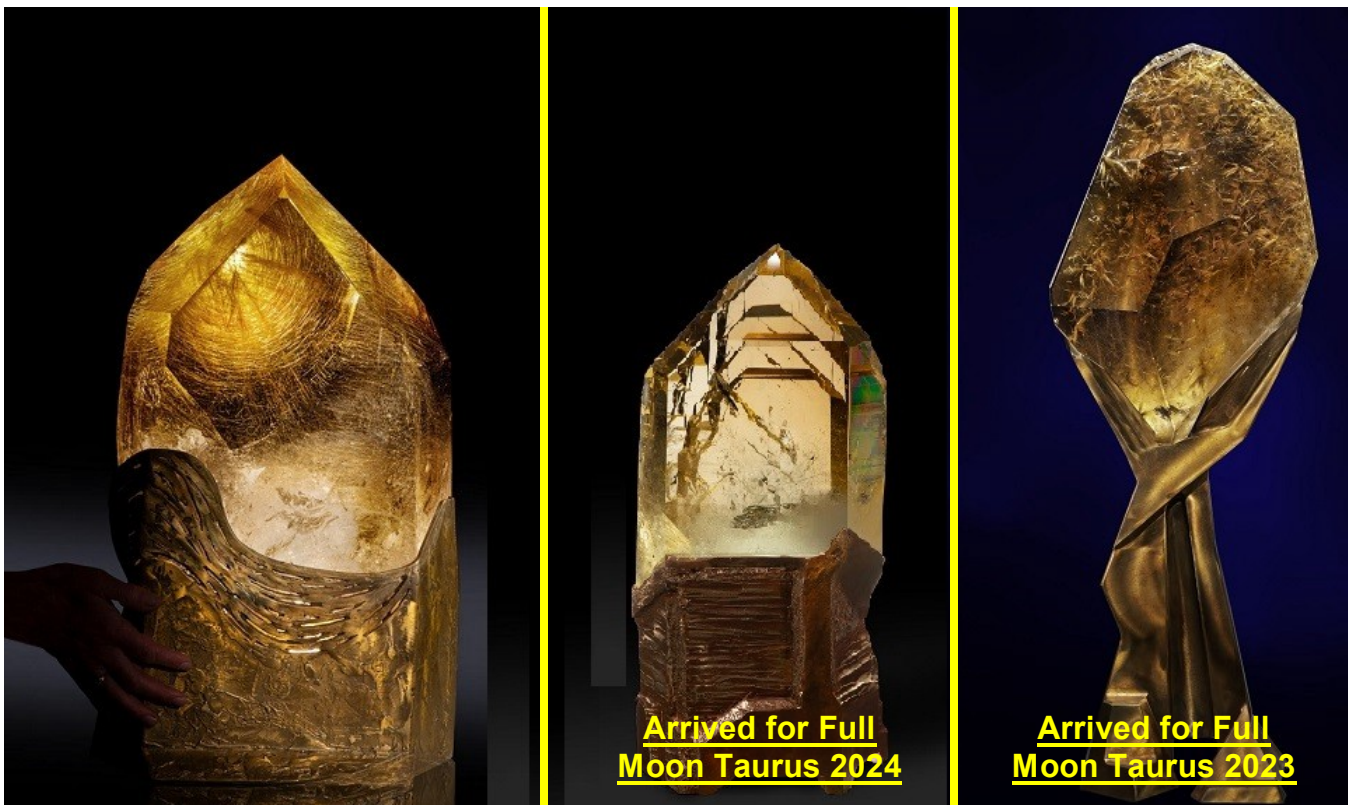
**A. Notes on this coming Full Moon of October/Libra:**

- 1. Watch for any impressions** that may come to you before the Full Moon that may relate to the Ray 3 Keynotes and your specific Rays (from your Color Consultations), especially two days before the Full Moon, the day of the Full Moon and two days after the Full Moon. **If you want to share** any of your impressions with us please do. If you want any impressions shared with the group let us know and we will include them in the next month's meditation notes.
- 2. This is the seventh of twelve different Full Moons of this Astrological year (there will be thirteen Full Moons this year since there were two Full moons in the sign of Cancer this year in June and July)** and is the fourth of the nine different (or this year ten full moons for distribution) distribution of Consciousness and Energy' full moons of this astrological year. The energy which is built and gathered during these first three 'Building' Full Moons at the beginning of the astrological year, which is also called the 'higher interlude', will then be distributed over the last nine different Full Moons during the end of the astrological year, which is also called the 'lower interlude'.
- 3. Addendum 1 also from the Full Moon report of Aries (from April 2021) gives reference into more insight and inspiration for how to** view some of the expanded awareness of these monthly and yearly Full Moon cycles as we enter into the sixth Astrological Year of this group formation and the group's beginning functioning.
- 4. Addendum 1 below relates to** how each Ray effects the constellations as fundamental hypotheses.

5. **The 2024-5 astrological year Annual Keynote is, “LET THE GROUP DEDICATE ITSELF ANEW TO THE SERVICE OF THE COMING ONE AND DO ALL IT CAN TO PREPARE HUMAN MINDS AND HEARTS FOR THAT EVENT. WE HAVE NO OTHER LIFE INTENTION.”**

**B. Notes and Activities on or since the last Full Moon September/Virgo:**

1. **SuonAngelMiriam meditated at the time of the full moon and new moon together with Safi (when she wanted). We had what we consider very good meditations for the continuing of the grounding of consciousness cycle of the astrological year. The new moon of Libra which was an annular eclipse happened on October 2<sup>nd</sup> which was also the celebrated day for Guardian Angels who protect us. These additional factors and also using the SAMfume Auric Enhancers of The Guardian Angels of Protection and of Libra the Constellation of Equilibrium, seemed to have a positive impact on our meditations. We are also having more experiences during the toning, chanting and vocalizing parts of the meditations and with the group esoteric crystals this year.**
2. **The Three Group Central Pillar Crystals and the Esoteric (based on numerological 8) and Occult (based on numerological 9) crystal sub-sets have been finalized along with any rearranging of the other crystals of the over-all set for the 2025 impulse. Please let us know if you would like to explore any of these crystals or have any other input (see photo in previous FM report of Gemini of June 2022). The three natural triple pointed crystal clusters are always available for any group members who would like to meditate with them as another way to tune into group consciousness (see previous photo from March 2022 Pisces report). Of three new 'Circumcentral' crystals one is still on a Lay-Away plan to be here by the Summer Solstice of 2025 for the Hierarchical Group Impulse year of 2025. The first of the three has arrived before the past Full Moon of Taurus 2023 and the second has arrived for this full moon of Taurus 2024 (see photo below or <http://www.sam2013.org/crystals.html> on our website for more information).**



3. **Two hand held faceted crystals have been ordered. A. One, which is a combination of a Phase I and Phase II crystal which has 'Blue Needles' which have an esoteric quality to transcend time and is a more personal healing crystal for Suon for present, past and future health issues, and B. One, which has a triangular bottom and also is a combination of a Phase I and Phase II crystal and which is available to anyone who wants to consider having such a crystal (see photo below).**



4. **Poppy research at BioFarmland** (BFL) at Virginia's suggestion. Seeds from last year's wild Poppy harvest were collected and planted in last June 2023 for growing during the 2024 season. A small number of the poppies have come out this year (May 2024) and their seeds have been encouraged to spread more next year in 2025.
5. **Revised and renewed Hemp Museum suggestion** presented to Zoli, Virginia, and Leontina as a possible group project. There was similar input about local, village or household museums from the "Socio-Economico-Cultural Rebirth of the Romanian Village" conference in previous reports. Latest brief meeting was in Timisoara this spring to talk more informally about these topics.
6. **Based on Leontina's previous intentions to establish an educational location near her home further discussions are going on about** a location, financing, possible links to other hemp projects and people. An initial estimate to get a small workshop space built on her land, for materials with mainly voluntary labor or construction, is 3,000 Euros. Due to challenges encountered with the political system at her home location, Leontina has decided to stop for the moment Sopronul Cultural and the building of the dome until the environment becomes more friendly to her projects. See previous update concerning Pamantul Stramosesc in the FM 2023 Sagittarius Report from November 2023.
7. **SuonAngelMiriam have met personally with Georghe Piperea** and joined his class action law suit against the constitutionality of mandates which is moving forward as discussed in the Full Moon cover letter for Capricorn (2021). September 2022 hearing produced a change in how and who the



law suit will be claiming as the defendants and the suit is continuing now at the appeal stage of litigation. The next court date has been set for late January 2024. We were notified last week that the case has been lost without further appeal and we have the details of the courts decision and are awaiting for a final brief conversation with Gheorghe Piperea after June 10, 2024. We are still waiting for a final update in October, since George is traveling due to his new election to the EU parliament. Let us know if you have additional comments or questions.

8. **SuonAngelMiriam are continuing our interaction with Katharina documenting** how to manage and implement new and better ways of herb growing, drying, processing, soil regeneration, distilling, etc.
9. **SuonAngelMiriam are interacting with Virginia on her Bio-Resonance and Herbal and Aromatherapy courses, consultations** and treatments along with the consideration of the SAM2013 Synthesis Tri-Level Color Set as liquids. Updated at meetings in September and October 2022, continuing with Virginia's Certified Herbal and Aroma Therapy courses #1 and now #2 which was in March 2023 and had another meeting at EsotericFest in June 2023 (also see Item #2 below in previous activities archive). The most recent meeting was held at EsotericFest in November 2023 with plans for the next meeting in Spring 2024 once work is completed on Color and Crystal Course educational manuals. The manuals have been completed in February 2024 and two meetings were held in March to go over more input and refinements of the process prior to a May meeting at EsotericFest in Timisoara. In meetings since the May EsotericFest The Color Course has been approved for accrediting by ANATECOR and plans are proceeding to get further details and SAM2013 products ready for the course materials. We have also been receiving treatments and products for some health concerns of Suon.
10. **SuonAngelMiriam are working with Remus and others on updating and expanding** one of his personal spirituality courses on Self Esteem as an Esoteric Group project. Anyone interested in knowing more or helping in this group project please let us know. Latest update was in October 2023.
11. **We participated in Remus' course about Stress Management** held through ANATECOR which is related to Virginia's fitotherapy course. We also attended the prayer zoom meeting he and Anatecor organized for the professor Mircea Stefea who passed recently.
12. **SuonAngelMiriam are working with Aurellian on how some of the concepts of his book and course** on "The Numerology of the Soul" might relate and correspond to the SAM2013 Synthesis Tri-Level Color System numerology. Both Aurellian and Suon have had direct contact with Yogi Bahjan who taught the numerology of the soul concepts.
13. **SuonAngelMiriam are working with Mircea on ways of distributing SAMfume** and other products and working more closely together on the other projects listed above. Recent meetings held in September Singfest and at the Singureni Christmas Fair 2022 and then in June 2023 also. The last meeting in Bucharest in March, 2024 for a brief update.

#### **C. Previous Activities Archive:**

1. **Hemp** for cooperative research at BioFarmland (BFL) on hold after 3 years of testing.
2. **2023 Timisoara Cultural Capital office cooperative event named 'SAMatate'**. See FM Sagittarius 2023 for final update on this report.

#### **D. General Notes and considerations about the group, cycles, meditation and information flow:**

1. **We are happy to get to know each other better**, or other ways that we may cooperate either personally, or as organizations. Please let us know if you would like any other meetings or if you have any other comments or questions.
2. **2024 continues the new seven year cycle started in 2020**. The final major group 'impact' has been made in 2019 prior to the next 100 year 'impulse' which happens during 2025.
3. **It might be considered that these Group Meditations seek** to make use of the spiritual opportunities that the cycles of full moons, solstices and equinoxes, Group Festival Weeks and Centennial Impulse years provide. The unique energies associated with each constellation, season and longer cycles are directed into the consciousness as trans-formative qualities that can lift and expand our hearts and minds.
4. **It might be considered that Group Living tends to the fulfillment of free will in service** and, as this is gradually understood, coming together to co-operate on issues for the benefit of the whole without intentions to dominate, interfere or impose on others. The vision is there, the future is assured, but the key to its successful implementation is that co-operation has to be based on intentions that are based on the good of the whole rather than a focus on self-interest.
5. **In all meditation it is of value for the student to remember that**, from the standpoint of permanent benefit, it is easier to meditate effectively during the period from the new moon to the full moon, than from the full moon to the new moon. The first half of the lunar cycle is one of intensification, absorption and accretion; the second half is one of assimilation and distribution. More real progress over a long period can be made by observing this cyclic law.

- 6. Wisely utilizing newly acquired energies keeps inflowing and out flowing channels open** and prevents Sycal (psychical), Astral (emotional), Mental (intellectual) congestions, which may otherwise be experienced, with their accompanying physical consequences.
- 7. The following regular monthly cycle is for the group information flow:**
- Full Moon (five days): Two days before, the day of (meditation), and two days after Full Moon for getting impressions.
  - The week after the 5 days of the Full Moon: For letting us know or sharing of any impressions during the preceding 5 days. Plus us transcribing our own impressions.
  - Second week after Full Moon for 'Anchoring' or 'Grounding' impressions through gathering other information or following up on activities based on the impressions. Possible New Moon meditation by those who want and ending that Full Moon Cycle.
  - Third week after Full Moon (just after the New Moon): Starting to build up to the next Full Moon having any questions to impressions shared and answered and any activities based on impressions started or completed.
  - Fourth week after the Full Moon (just before the next Full Moon): Coming out with the Keynote and information and timing of the next Full Moon, including the shared impressions or activity from the last Full Moon.

### Addendum 1:

### Ray effects on the constellations as fundamental hypotheses from EA (Free online at [https://www.lucistrust.org/online\\_books/esoteric\\_astrology\\_obooks](https://www.lucistrust.org/online_books/esoteric_astrology_obooks)):

#### **The Zodiac and the Rays (Continued from the last Full Moon report of Virgo):**

... This third Hierarchy wields the third aspect of electric force of the first type of cosmic energy. They stand for a recurrent cycle of that first type symbolised by the number 8. The formulae for these electrical energies are too complicated to be given here, but the student should bear in mind that these Hierarchies express:

1. Septenary cosmic energy.
2. Cosmic prana.
3. Solar energy or electric fire, solar fire and fire by friction.

Each Hierarchy manifests a triple energy or an aspect of each of the above, and that necessitates a ninefold differentiation, for the two first are triple, as is the third. It is the rejection of the Triadal lives by units in the fourth Hierarchy, that of the human Monads, which precipitates a man eventually into the eighth sphere. He refuses to become a Christ, a Saviour and remains self-centred.

We have dealt with the first three Hierarchies which are regarded as ever "seeing the Face of the Ruler of the Deep," or as being so pure and holy that Their forces are in realised contact with Their emanating source.

We now take up for brief consideration two Hierarchies which closely concern ourselves, the human self-conscious entities. These two groups are literally three, as the fifth Hierarchy is a dual one, and it is this which has led to some confusion and is the occult significance behind the ill-omened number thirteen. They are the "Seekers of satisfaction" and the cause of the second fall into generation, the fact [Page 42] behind the taking of a lower nature by the Ego. The fourth and the fifth Hierarchies are the ninth and tenth, or the "Initiates" and the "Perfect Ones." All human beings, or "Imperishable Jivas," are those who evolve through a graded series of initiations, either self-induced or brought about on our planet with extraneous aid. They achieve through a "marriage" with the order next to them, the fifth. They are then completed or perfected, and it is owing to this occult fact that the fourth Hierarchy is regarded as masculine and the fifth as feminine.

Hierarchy IV. The fourth Creative Hierarchy is the group wherein the highest aspect of man, his "Father in Heaven" finds place. These lives are the points of fire who must become the flame; this they do through the agency of the fifth Hierarchy and the four wicks, or the two dual lower hierarchies. Thus it can be seen that where man is concerned, the fourth, fifth, sixth and seventh Hierarchies are, during the cycle of incarnation, his very self. They are the "Lords of Sacrifice" and "Lords of Love," the flower of Atma-Buddhi.

In studying these Hierarchies, one of the most valuable lessons to be learned is the place and importance of man in the scheme. The Hierarchy, for instance, which is the essence of the intangible Life of Spirit, the principle of Buddhi, is the esoteric cause of the cosmic marriage of spirit and matter, based on the love and desire of the Logos, but each Hierarchy also expresses itself through one particular manifestation which comes to be regarded by the finite mind of man as the Hierarchy itself. This is not so, and care must be taken to distinguish between these Hierarchies.

They are latent germs of force centres and manifest subjectively; they warm and vitalise groups of forms; they [Page 43] flower forth and express themselves through the medium of a form, or another Hierarchy. These Hierarchies are all interrelated and are negative or positive to each other, as the case may be.

As is stated in The Secret Doctrine, I. 238, this Hierarchy is the nursery for the incarnating Jivas; and it carried in it the germs of the Lives which achieved the human stage in another solar system, but were not able to proceed beyond that owing to the coming in of pralaya, which projected them into a state of latency. The condition of the Hierarchy is similar, only on a cosmic scale, to the condition of the seeds of human life held in a state of obscurity during an interchain period. The three other Hierarchies dealt with (first, second and third) were those who have (in previous kalpas of logoc manifestation) passed beyond the human stage altogether. They are, therefore, the arupa or formless groups, as the remaining are the rupa groups or those having forms.

The fourth Creative Hierarchy, or the ninth, must ever be regarded in this solar system as occupying what might be considered as the third place,

First, the Lives or the three Persons of the Trinity.

Second, the Prototypes of man, the seven Spirits.

Third, man or the lowest manifestation of the self-conscious Spirit aspect.

This needs to be carefully considered and has no reference to the form aspect but solely to the nature of the Lives expressing themselves through other lives who are also self-conscious, or fully intelligent. This, certain of the Hierarchies are not.

The four lower Hierarchies are all concerned with manifestation [Page 44] in the three worlds, or in the dense physical body of the solar Logos. They are Those who can discard or pass through the etheric body of the solar Logos and take forms composed of either gaseous, liquid, or dense substance. The others cannot. They cannot fall into physical generation.

Students must bear in mind that from the standpoint of the Logos, the solar Angels on the mental plane (the fifth subplane of the cosmic physical plane) are in physical incarnation, and what is called the "second fall" applies to this. The first fall has reference to the taking of a form of cosmic etheric matter, such as is the case with the Heavenly Men, the prototypes of the human jivas. In this latter case the bodies used are called "formless" from our standpoint, and are "vital bodies," animated by cosmic prana. In the case of ourselves and the remaining groups, the forms are composed of substance of the three lower planes (that which the Logos does not regard as a principle) and, therefore, matter responding still to the vibration of the earlier system. This means that the four lower Hierarchies are links between the life of the past and of the future. They are the present. They had not finished their contacts with the active intelligent principle of the preceding kalpa, and so must continue such contacts in this. They will work out of it in this system, the four will become the three and they will then be the three higher arupa Hierarchies of the next system.

Before continuing our consideration of the particular Hierarchies, it is necessary to point out that in these Hierarchies, certain of them are termed "dominant hierarchies" and others "subsidiary hierarchies." By this is meant that certain of them are expressing themselves in this solar system more fully than the others, and this necessarily entails [Page 45] the consequence that their vibration is more to be felt than that of the subsidiary groups. The dominant groups are the second, fourth and fifth, and this because:

a. The second is the great expression of duality, of the Son as He vitalises the Sun.

b. The fourth is the Hierarchy of human Monads who are the mediators or the synthesisers; they express the gain of System 1 and the goal of System 2.

c. The fifth or tenth is closely linked with the five liberated Hierarchies, and is an expression of their synthesised life. It might, therefore, be said that the fifth Hierarchy serves as the representative of the five liberated groups, and the fourth is the representative group in this system, whilst the second represents (for man, or these two groups united) that which is the Spirit aspect, the Father, the Unknown.

Hierarchy V. The fifth Creative Hierarchy is, as we know from study of The Secret Doctrine, a most mysterious one. This mystery is incident upon the relation of the fifth Hierarchy to the five liberated groups. This relation, in connection with our particular planet, which is not a sacred planet, can be somewhat understood if the history of the Buddha, and His work is contemplated. This is hinted at in the third volume of The Secret Doctrine.

The relation of the fifth Hierarchy to a certain constellation has also a bearing upon this mystery. This is hidden in the karma of the solar Logos, and concerns His relationship to another solar Logos, and the interplay of force between Them in a great mahakalpa. This is the true "secret of the Dragon," and it was the dragon-influence or the "serpent energy" which caused the influx of manasic or mind energy into the solar system. Entangled closely [Page 46] with the karma of these two cosmic Entities, was that of the lesser cosmic Entity Who is the Life of our planet, the planetary Logos. It was this triple karma which brought in the "serpent religion" and the "Serpents or Dragons of Wisdom," in Lemurian days. It had to do with solar and planetary Kundalini, or Serpent fire. A hint lies in the fact that the constellation of the Dragon has the same relation to the ONE greater than our Logos as the centre at the base of the spine has to a human being. It concerns stimulation, and vitalisation with a consequent co-ordination of the manifesting fires.

A clue to the mystery lies also in the relation of this fifth group to the two contracting poles. They are the five-fold Links, the "Benign Uniter" and "the Producers of the Atonement." Esoterically, they are the "Saviours of the Race" and from Them emanates that principle which—in conjunction with the highest aspect—lifts the lower aspect up to Heaven.

When these mysteries are carefully studied, and due application made to the lives of the greatest exponents of the at-one-ing principle, it will become apparent how great and all-important is their place in the scheme.

It is for this reason that the units of the fifth Hierarchy are called "The Hearts of Fiery Love"; They save through love, and in Their turn these lives are peculiarly close to the great Heart of Love of the solar Logos. These great redeeming Angels, Who are the Sons of Men on their own true plane, the mental, are ever, therefore, pictured as taking the form of twelve-petalled lotuses—this symbology linking them up with "the Son of Divine Love," the manifested solar system, which is said to be a cosmic twelve-petalled lotus, and with the logoc causal lotus, equally of a twelve-petalled nature.

[Page 47]

We have, therefore, a direct stream of energy flowing through:

- a. The logoc twelve-petalled egoic lotus, cosmic mental plane.
- b. The solar twelve-petalled lotus.
- c. The planetary logoc heart, also a twelve-petalled lotus.
- d. The twelve-petalled human egoic lotus on the mental plane.
- e. The twelve-petalled heart centre in a human being.

Or, to word it otherwise, energy flows direct from:

- a. The solar Logos, via three great cosmic centres:

1. The central spiritual Sun.
2. The heart of the Sun.
3. The physical Sun.

- b. The heart centre of the planetary Logos, situated on the fourth cosmic etheric plane (our buddhic plane).

c. The egoic lotus of a human being on the mental plane, which is literally a correspondence to the "heart of the Sun." The monadic point is a reflection in the human system of the "central spiritual Sun."

- d. The heart centre of a man on the etheric plane of the physical plane, which is in its turn a correspondence to the physical Sun.

Thus the tiny atom is linked with the great central Life of the solar system.



This fifth Hierarchy is equally, under the law, a distributor of energy to the fifth subplane of each plane in the system, only it must be borne in mind that, in the three worlds, it is the fifth subplane counting from above downwards, whilst in the worlds of superhuman evolution, it is [Page 48] the fifth counting from below upwards. This Hierarchy wields, as we know, the dual aspects of manas, one in the three worlds and one which makes itself felt in higher spheres.

It is necessary to bear in mind that all these groups are (even when termed "formless") the true forms of all that persists, for all are in the etheric body of the solar Logos or planetary Logos. This is a point requiring careful emphasis; students have for too long regarded the form as being the dense physical body, whereas to the occultist the physical body is not the form, but a gross maya, or illusion, and the true form is the body of vitality. Therefore, these Hierarchies are the sum total of the vital lives and the substratum or the substance of all that is. We might regard the subject as follows:

a. The four superior groups are the Hierarchies expressing themselves through the three cosmic ethers, the second, third and fourth.

b. The two lowest groups are the lives which are found functioning as the involutory matter (organised and unorganised) of the logocic dense physical body, the liquid and gaseous, with the living substance of the four higher subplanes of the systemic dense physical body.

c. The fifth Hierarchy has an interesting position as the "mediating" body between the higher four and those which are found on the lower three subplanes. There is a vital and significant correspondence to be found between the seven head centres and the seven groups of egos on the mental plane, and there is an occult analogy between the three head centres (pineal gland, pituitary body, and the alta major centre) and the expression of these seven groups of egos in the three worlds. This is [Page 49] a most esoteric fact, and all students meditating upon the laws of at-one-ment must take this analogy into consideration.

It is useful to remember the place of these Hierarchies in the scheme, and to realise that upon the sum total of these vital bodies is gradually gathered the dense manifestation which we regard as the evolutionary matter. The forms are built (from the form of all atoms to the body of the ego, from the form of a flower to the vast planetary or solar lotus) because the Hierarchies exist as the aggregate of germ lives, giving the impulse, providing the model, and procuring, through their very existence, the entire raison d'être of all that is seen on all planes.

Hierarchies VI and VII. These sixth and seventh Hierarchies which provide the substance forms of the three worlds have a vital use and a most interesting place. From the logocic standpoint, they are not regarded as providing principles, but from the standpoint of man they do provide him with His lowest principles. They hold the same relation to the Logos as the dense physical body does to man, and all that concerns the evolution of man must (in this particular place) be studied as going on within the physical, logocic vehicle. They deal with the display of physical energy; with the working out in the physical vehicle of all divine purposes, and with the physical organisation of a certain great cosmic Life.

Particularly is this so when we view the two Hierarchies under consideration. They are the lowest residue of the previous system, and the energy of that matter (liquid, gaseous and dense) which the vibration of the logocic permanent atom (on the plane adi) attracts to itself in the building of the divine form. For purposes of clarification [Page 50] and of generalisation, it might be noted that the seventh Hierarchy is the life or energy found at the heart of every atom, its positive aspect, and the sixth Hierarchy is the life of the forms of all the etheric bodies of every tangible object. The function of this Hierarchy is well described in the words of the Old Commentary:

"The devas hear the word go forth. They sacrifice themselves and out of their own substance they build the form desired. They draw life and the material from themselves, and yield themselves to the divine impulse." A Treatise on Cosmic Fire, pages 1196-1207...

**To Be Continued in the next Full Moon report of Scorpio.**

**To be considered below as closing for this Full Moon Addendum of Libra.**

...Again and repeatedly, students must remind themselves that we are considering the impact of energy upon energy units (all qualified and producing appearance) and with the response of those energy units to



the streams of force which reach them from "the furthest center." It is in the development of response to distant points of contact and emanating sources of energy that the needed sensitivity is produced.

Sensitivity, generally speaking, is of a threefold nature:

1. Sensitivity to that which is found within oneself. This, when the consciousness is adequately self-sufficient, opens a door for the entrance of energies coming from the "middle center." I speak in symbols and for those whose knowledge of cosmic location and of points in time and space will enable them to comprehend; to the uninitiate, I simply say, "Respond to soul impact."

2. Sensitivity to that which emanates from the "centers left behind" or to those streams of vital energy which lie active and focused below the threshold of the waking consciousness. They stir the threads of memory; they draw backward the glances (and there lies magic in the energy of the eye) of the onward moving Point, the Pilgrim on his way; they condition through ancient habit the responsiveness of the units in the form.

3. A developed sensitivity which emerges from the "furthest center" at first unconsciously employed and later consciously directed and attuned - a fully magnetic and attractive sensitivity. Forget not that true interplay imposes the condition of reciprocity and that the two points or termini of a line eventually vibrate in unison.

The Rays pour through, are expressed by and are transmitted through the following constellations:

Ray I	Aries	Leo	Capricorn
Ray II	Gemini	Virgo	Pisces
Ray III	Cancer	<b>Libra</b>	Capricorn
Ray IV	Taurus	Scorpio	Sagittarius
Ray V	Leo	Sagittarius	Aquarius
Ray VI	Virgo	Sagittarius	Pisces
Ray VII	Aries	Cancer	Capricorn

### **Conclusion (at this point):**

May we consider together entering into that higher state of (group/soul) 'bewilderment', especially at this cycle of Aquarian consciousness, yet strength and unity from our lower state of personal certitude and isolation to possibly obtain a universal group consciousness.