

Full Moon of Scorpio, ninth Full Moon of this Astrological Year, on Friday, November 15, 2024, at 23:28:17 in Romania:

The main Keynote or phrase to consider for all Scorpio Full Moons (each year): **“Warrior I am and from the battle I emerge triumphant.”** The Scorpio Full Moon Keynote of Light each year is: **“The Light of Day. (Hint 1: This is the place where three lights meet the light of form, the light of soul, and the light of life. Hint 2: They meet; they blend; they rise.)”** Consider the Keynotes at, or as close to, the time of the Full Moon as possible and what it might mean as a Group. Each of the constellations also have at least one, but also as many as five, Ray determining energies by which they rule and of which they rule. **The main Ray energy of Scorpio is Ray 4.** So, Scorpio has a main energy of Harmony through Conflict. This energy can also be expressed by the word Beauty and can also be described as Mathematical Precision. It is a recommendation to consider the Scorpio Keynotes as Ray 4 Keynotes. This is a direct correspondence to the information of our Color Consultations and the way this same Ray determining affects us individually and in our relationship to our group. So, our Color Consultation information can be reviewed and related to each of the Full Moon determining energies to determine the possible effects and opportunities each Full Moon offers each of us personally and in relationship with the group. This was explained and expanded upon from Esoteric Astrology (EA) in general in Addendum 1 from the past Aries Full Moon report (from April 2021 – please let us know if you would like that resent to you or it can be downloaded from the website at the bottom of the page at: www.sam2013.org/group_consciousness.html).

We are adding an additional consideration each month to help in the understanding of the seven Rays called **'The Keys to the Seven Ray Methods'**. The Key to the Ray 4 Method is: **"Let the outer glory pass away and the beauty of the inner Light reveal the One. Let dissonance give place to harmony, and from the centre of the hidden Light let the soul speak, let the word roll forth: 'Beauty and glory veil Me not. I stand revealed. I Am.'"**

This year we are adding information on how each Ray effects the constellations as fundamental hypotheses as Addendum 1 below. Scorpio is the eighth different sign of this new Astrological year (which started with Aries in March) and the fifth of the normal 9 (but this year 10) distribution and grounding energy and consciousness Full Moons of the year. It helps to continue the lower 'anchoring' cycle for the astrological year after the building and higher cycle of Aries, Taurus, and Gemini (March, April, May of this year). Addendum 3 from the last Aries Full Moon report (from April 2023) is some additional information on the full moons and possible meditation forms (please let us know if you need that resent to you or it can be downloaded from the website at the bottom of the page at: www.sam2013.org/group_consciousness.html).

Please continue to keep in mind, from the Gemini Full Moon Report (May 2024), Addendum 2 which was two papers titled, "Vision Paper: Unfolding Work for 2024-2026" by 2025 Initiative (www.2025initiative.org) and "More details about this proposed experiment and our groups' ideas about the unfolding opportunities of the period of 2024-2026". The addendums started with a note from us as an introduction about the papers and can also be found on the website at the bottom of the page at: www.sam2013.org/group_consciousness.html.

A. Notes on this coming Full Moon of November/Scorpio:

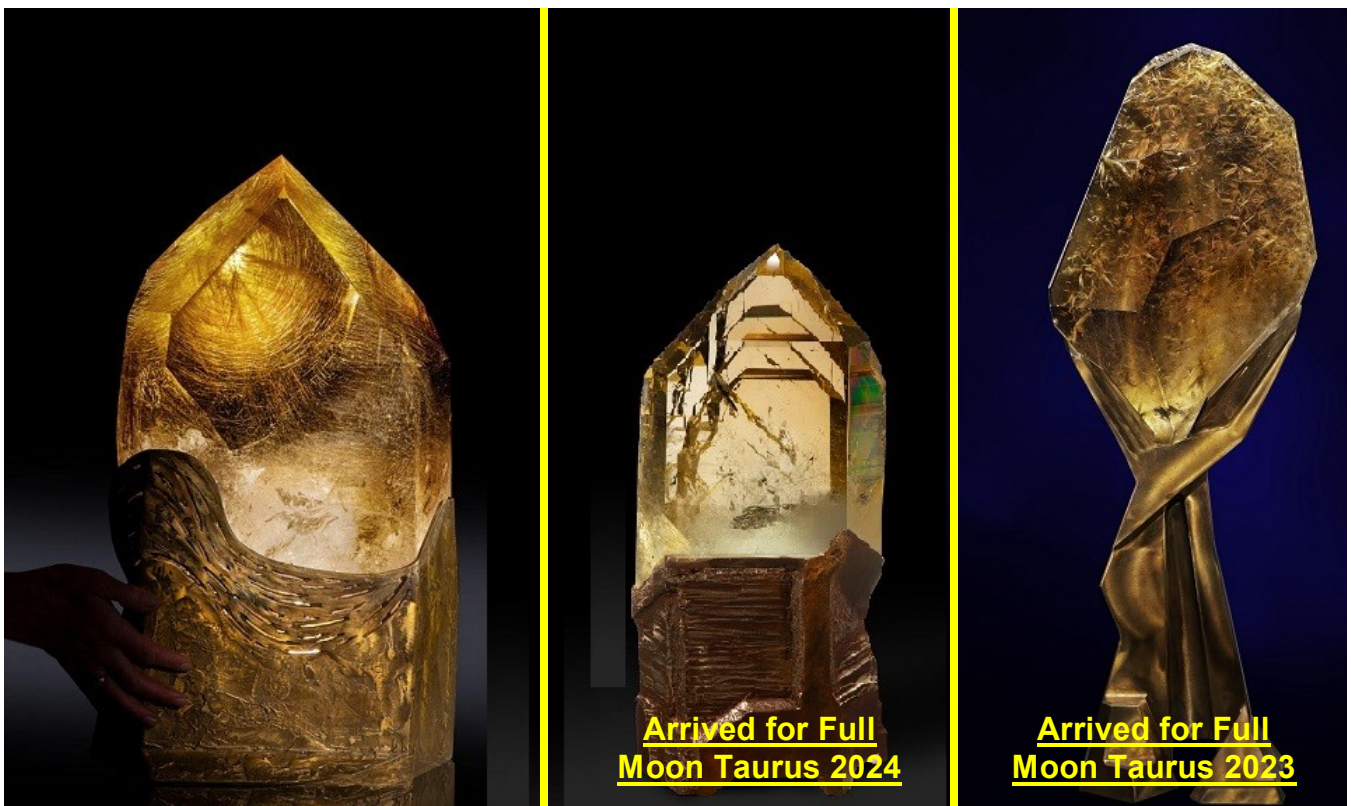
- 1. Watch for any impressions** that may come to you before the Full Moon that may relate to the Ray 4 Keynotes and your specific Rays (from your Color Consultations), especially two days before the Full Moon, the day of the Full Moon and two days after the Full Moon. **If you want to share** any of your impressions with us please do. If you want any impressions shared with the group let us know and we will include them in the next month's meditation notes.
- 2. This is the eighth of twelve different Full Moons of this Astrological year (there will be thirteen Full Moons this year since there were two Full moons in the sign of Cancer this year in June and July)** and is the fifth of the nine different (or this year ten full moons for distribution) distribution of Consciousness and Energy' full moons of this astrological year. The energy which is built and gathered during these first three 'Building' Full Moons at the beginning of the astrological year, which is also called the 'higher interlude', will then be distributed over the last nine different Full Moons during the end of the astrological year, which is also called the 'lower interlude'.
- 3. Addendum 1 also from the Full Moon report of Aries (from April 2021) gives reference into more insight and inspiration for how to view some of the expanded awareness of these monthly**

and yearly Full Moon cycles as we enter into the sixth Astrological Year of this group formation and the group's beginning functioning.

4. **Addendum 1 below relates to** how each Ray effects the constellations as fundamental hypotheses.
5. **The 2024-5 astrological year Annual Keynote is,** "LET THE GROUP DEDICATE ITSELF ANEW TO THE SERVICE OF THE COMING ONE AND DO ALL IT CAN TO PREPARE HUMAN MINDS AND HEARTS FOR THAT EVENT. WE HAVE NO OTHER LIFE INTENTION."

B. Notes and Activities on or since the last Full Moon October/Libra:

1. **SuonAngelMiriam meditated at the time of the full moon and new moon together with Safi (when she wanted). We had what we consider** very good meditations for the continuing of the grounding of consciousness cycle of the astrological year. The new moon of Scorpio happened on November 1st which was also the celebrated day for All the Saints who Guide us. These additional factors and also using the SAMfume Auric Enhancers of All The Saints of Guidance seemed to have a positive impact on our meditations. We are also having more experiences during the toning, chanting and vocalizing parts of the meditations and with the group esoteric crystals this year.
2. **The Three Group Central Pillar Crystals** and the Esoteric (based on numerological 8) and Occult (based on numerological 9) crystal sub-sets have been finalized along with any rearranging of the other crystals of the over-all set for the 2025 impulse. Please let us know if you would like to explore any of these crystals or have any other input (see photo in previous FM report of Gemini of June 2022). **The three natural triple pointed crystal clusters** are always available for any group members who would like to meditate with them as another way to tune into group consciousness (see previous photo from March 2022 Pisces report). **Of three new 'Circumcentral' crystals one is still on a Lay-Away plan** to be here by the Summer Solstice of 2025 for the Hierarchical Group Impulse year of 2025. The first of the three has arrived before the past Full Moon of Taurus 2023 and the second has arrived for this full moon of Taurus 2024 (see photo below or <http://www.sam2013.org/crystals.html> on our website for more information).



3. **Two hand held faceted crystals will be shipped for this Full Moon. A. One, which is a combination of a Phase I and Phase II crystal which has 'Blue Needles' which have an esoteric quality to transcend time and is a more personal healing crystal for Suon for**

present, past and future health issues, and B. One, which has a triangular bottom and also is a combination of a Phase I and Phase II crystal and which is available to anyone who wants to consider having such a crystal (see photo below).



4. **Poppy research at BioFarmland (BFL)** at Virginia's suggestion. Seeds from last year's wild Poppy harvest were collected and planted in last June 2023 for growing during the 2024 season. A small number of the poppies have come out this year (May 2024) and their seeds have been encouraged to spread more next year in 2025.
5. **Revised and renewed Hemp Museum suggestion** presented to Zoli, Virginia, and Leontina as a possible group project. There was similar input about local, village or household museums from the "Socio-Economico-Cultural Rebirth of the Romanian Village" conference in previous reports. Latest brief meeting was in Timisoara this spring to talk more informally about these topics.
6. **Based on Leontina's previous intentions to establish an educational location near her home further discussions are going on about** a location, financing, possible links to other hemp projects and people. An initial estimate to get a small workshop space built on her land, for materials with mainly voluntary labor or construction, is 3,000 Euros. Due to challenges encountered with the political system at her home location, Leontina has decided to stop for the moment Sopronul Cultural and the building of the dome until the environment becomes more friendly to her projects. See previous update concerning Pamantul Stramosesc in the FM 2023 Sagittarius Report from November 2023.

7. **SuonAngelMiriam have met personally with Georgh Piperea** and joined his class action law suit against the constitutionality of mandates which is moving forward as discussed in the Full Moon cover letter for Capricorn (2021). September 2022 hearing produced a change in how and who the law suit will be claiming as the defendants and the suit is continuing now at the appeal stage of litigation. The next court date has been set for late January 2024. We were notified last week that the case has been lost without further appeal and we have the details of the courts decision and are awaiting for a final brief conversation with Gheorgh Piperea after June 10, 2024. We are still waiting for a final update in November, since George is traveling due to his new election to the EU parliament. Let us know if you have additional comments or questions.
8. **SuonAngelMiriam are continuing our interaction with Katharina documenting** how to manage and implement new and better ways of herb growing, drying, processing, soil regeneration, distilling, etc.
9. **SuonAngelMiriam are interacting with Virginia on her Bio-Resonance and Herbal and Aromatherapy courses, consultations** and treatments along with the consideration of the SAM2013 Synthesis Tri-Level Color Set as liquids. Updated at meetings in September and October 2022, continuing with Virginia's Certified Herbal and Aroma Therapy courses #1 and now #2 which was in March 2023 and had another meeting at EsotericFest in June 2023 (also see Item #2 below in previous activities archive). The most recent meeting was held at EsotericFest in November 2023 with plans for the next meeting in Spring 2024 once work is completed on Color and Crystal Course educational manuals. The manuals have been completed in February 2024 and two meetings were held in March to go over more input and refinements of the process prior to a May meeting at EsotericFest in Timisoara. In meetings since the May EsotericFest The Color Course has been approved for accrediting by ANATECOR and plans are proceeding to get further details and SAM2013 products ready for the course materials. We have also been receiving treatments and products for some health concerns of Suon.
10. **SuonAngelMiriam are working with Remus and others on updating and expanding** one of his personal spirituality courses on Self Esteem as an Esoteric Group project. Anyone interested in knowing more or helping in this group project please let us know. Latest update was in October 2023.
11. **We participated in Remus' course about Stress Management** held through ANATECOR which is related to Virginia's fitotherapy course. We also attended the prayer zoom meeting he and Anatecor organized for the professor Mircea Stefea who passed recently.
12. **SuonAngelMiriam are working with Aurellian on how some of the concepts of his book and course** on "The Numerology of the Soul" might relate and correspond to the SAM2013 Synthesis Tri-Level Color System numerology. Both Aurellian and Suon have had direct contact with Yogi Bahjan who taught the numerology of the soul concepts.
13. **SuonAngelMiriam are working with Mircea on ways of distributing SAMfume** and other products and working more closely together on the other projects listed above. Recent meetings held in September Singfest and at the Singureni Christmas Fair 2022 and then in June 2023 also. The last meeting in Bucharest in March, 2024 for a brief update.

C. Previous Activities Archive:

1. **Hemp** for cooperative research at BioFarmland (BFL) on hold after 3 years of testing.
2. **2023 Timisoara Cultural Capital office cooperative event named 'SAMatate'**. See FM Sagittarius 2023 for final update on this report.

D. General Notes and considerations about the group, cycles, meditation and information flow:

1. **We are happy to get to know each other better**, or other ways that we may cooperate either personally, or as organizations. Please let us know if you would like any other meetings or if you have any other comments or questions.
2. **2024 continues the new seven year cycle started in 2020**. The final major group 'impact' has been made in 2019 prior to the next 100 year 'impulse' which happens during 2025.
3. **It might be considered that these Group Meditations seek** to make use of the spiritual opportunities that the cycles of full moons, solstices and equinoxes, Group Festival Weeks and Centennial Impulse years provide. The unique energies associated with each constellation, season and longer cycles are directed into the consciousness as trans-formative qualities that can lift and expand our hearts and minds.
4. **It might be considered that Group Living tends to the fulfillment of free will in service** and, as this is gradually understood, coming together to co-operate on issues for the benefit of the whole without intentions to dominate, interfere or impose on others. The vision is there, the future is assured, but the key to its successful implementation is that co-operation has to be based on intentions that are based on the good of the whole rather than a focus on self-interest.

5. **In all meditation it is of value for the student to remember that,** from the standpoint of permanent benefit, it is easier to meditate effectively during the period from the new moon to the full moon, than from the full moon to the new moon. The first half of the lunar cycle is one of intensification, absorption and accretion; the second half is one of assimilation and distribution. More real progress over a long period can be made by observing this cyclic law.
6. **Wisely utilizing newly acquired energies keeps inflowing and out flowing channels open** and prevents Sycal (psychical), Astral (emotional), Mental (intellectual) congestions, which may otherwise be experienced, with their accompanying physical consequences.
7. **The following regular monthly cycle is for the group information flow:**
 - a. Full Moon (five days): Two days before, the day of (meditation), and two days after Full Moon for getting impressions.
 - b. The week after the 5 days of the Full Moon: For letting us know or sharing of any impressions during the preceding 5 days. Plus us transcribing our own impressions.
 - c. Second week after Full Moon for 'Anchoring' or 'Grounding' impressions through gathering other information or following up on activities based on the impressions. Possible New Moon meditation by those who want and ending that Full Moon Cycle.
 - d. Third week after Full Moon (just after the New Moon): Starting to build up to the next Full Moon having any questions to impressions shared and answered and any activities based on impressions started or completed.
 - e. Fourth week after the Full Moon (just before the next Full Moon): Coming out with the Keynote and information and timing of the next Full Moon, including the shared impressions or activity from the last Full Moon.

Addendum 1:

Ray effects on the constellations as fundamental hypotheses from EA
(Free online at https://www.lucistrust.org/online_books/esoteric_astrology_obooks):

The Zodiac and the Rays (Continued from the last Full Moon report of Libra):

... TABULATION III

I. DYNAMIC ENERGY		Electric Fire
1. Sirius.....	Cancer Saturn..... Capricorn	Fifth Creative Hierarchy (the 8th Unknown)
<i>The Cardinal Cross</i>		
2. The Great Bear.....	Aries Sun, veiling Vulcan..... Libra	Second Creative Hierarchy (the 11th) Unknown
<i>The Cardinal Cross</i>		
3. Pleiades.....	Gemini Mercury..... Sagittarius	Fourth Creative Hierarchy (the 9th) Unknown
<i>The Mutable Cross</i>		

All the above energies are called into play as far as man is concerned during the major initiations and upon the Path of Initiation.

II. MAGNETIC ENERGY.....		Solar Fire
4. The 7 solar systems.....	Taurus Mars..... Scorpio	Third Creative Hierarchy (the 10th) Unknown
<i>The Fixed Cross</i>		

All the above energy is called into play as far as man is concerned whilst he is in training as a disciple and upon the Path of Discipleship.

NOTE: It is not revealed through which signs of the zodiac the first or twelfth Creative Hierarchy pours forth its energy.

Before continuing with the analysis of the tabulations and showing the inter-relations existing in this particular zodiacal cycle between the twelve signs of the zodiac and the twelve planets, there are certain things which I would like to point out here in connection with these zodiacal constellations. They are in the nature of generalisations, but the specific and the particular can be deduced from them.

First of all, I would point out that the twelve planets, governing the twelve houses, concern primarily the physical plane expression of the man; they affect potently the personality aspect; their influence, plus inherited karmic conditions, produces those environing states and those circumstances which give opportunity for the development and eventually the control of the form side of life.

Secondly, the twelve constellations are concerned primarily with the stimulation of the soul within the form, producing subjective activity which, in its turn, causes changes in the outer expression, through the fusion of the energy of the constellation with the energy of the planets. The effect produced falls into two stages:

1. The first stage wherein the sun sign dominates the man and he is gradually fitted to respond to the soul. His latent possibilities for this life are unfolded. The effect of the sun sign is sometimes called "the potency of the Sun of Probability."

2. The second stage wherein there is increasing response to the energies, concealed by the rising sign. They evoke the unexpected and produce the hastening of the evolutionary process and the unfoldment of the inner life. The rising sign is termed in the language of esotericism "the Sun of Possibility."

Through the effect of the energy flowing from the zodiacal signs the man is prepared for the "crisis of orientation" wherein he slowly and gradually reverses his mode of progress upon the wheel of life and begins consciously to travel back to his source. He then goes from Aries to Pisces, via Taurus, Scorpio and Capricorn, instead of moving from Aries to Taurus via Sagittarius, Leo and Cancer. The triplicity of constellations mentioned in these two great routes around the zodiac have a definite and momentous effect and are called "paramount signs of influence." During this process the mental principle, the discriminating mind, is developed and in this specific connection (not in a general connection) the emphasis is laid upon the influence of Aries, Gemini and Libra. Under that influence the man learns to overcome desire through experiment with and experience of every kind of desire and selfish impulse. Thus gradually, and with infinite pain, the human soul learns to function first as a member of the human family, and, secondly as a spiritual entity, the divine soul.

You will see from the above that certain positions taken by the esoteric astrologer reverse the position of the orthodox astrology of today. The reason for this is that in the descent of ideas from the plane of ideas, they become "reversed" upon the astral plane and subject to the great illusion; astrology must eventually free itself from this reversal.

A right understanding of the effect of the various energies and forces will make it apparent that, when the conditioning planetary forces, the expanding energies of the sun sign and the driving energy of the rising sign are all being controlled and directed by the illumined spiritual man, you will then have a soul upon the very verge of liberation.

Eventually the energies of the twelve constellations and—at a final stage of experience and development - of the three great constellations which condition the solar Logos are blended with the innate energies of the seven rays or of the seven planetary Logoi. This marks a point of perfection. These extraneous energies (I refer here to those of the major constellations) are relayed to the Earth via the seven sacred planets and the five non-sacred planets, and when there is the complete fusion of the related energies and, therefore, full expression, a great world period comes to an end. For a long time during this cycle of reincarnations and periods of manifestation, the human being is conditioned almost entirely by the activity of the non-sacred planets. These, as you know, are five in number:

- The Sun (veiling a planet)
- The Moon (veiling a planet)
- The Earth itself
- Mars
- Pluto

Man—speaking symbolically—is the "five-pointed star and, at the fiery points, the forces of the man pour out and upon each fiery point appears a centre of reception." This is of course pictorially expressed, but the

meaning is clear. However, as man nears the Path of Discipleship the influence of the sacred planets becomes increasingly effective, until after the final and fifth initiation the non-sacred planets have no effect, though the initiate wields their energies potently as they pour into and through his vehicles of reception, of response and of expression, for all three activities and purposes must be noted.

The energies of the twelve constellations are blended with those of the twelve planets, but their power to evoke response, and to be consciously received, recognised and [Page 54] employed, is dependent entirely upon the type of response mechanism of the planetary Life and of the individual man. It has been rightly said that consciousness is dependent upon the vehicles of consciousness, upon their point of development and upon the ability of the individual to identify himself with the energies and impulses which are reaching him, and is not dependent only upon that which is already a recognised part or aspect of himself. It might be said that the higher response to the realities and qualities revealed and made possible by the impact of energy from the zodiacal signs is somewhat dependent upon the waning influence of the planets to hold down the consciousness aspect of the man. Ponder upon this, for it embodies a deep esoteric truth.

Thus, two potent streams of energy—cosmic and systemic—reach man via the conditioning planetary centres of force (the seven planetary schemes in the solar system and their corresponding seven centres in the planet on which we live) and pour into the symbolic "twelve houses" through their medium. It is for this reason that our solar system is spoken of as one of "intrinsic duality" (love-wisdom) and that the major task of man is the "regulation of the pairs of opposites." The theme of duality, therefore, runs through the whole story of man's development. Upon all the three planes of human unfoldment the reconciliation goes forward.

1. Upon the physical plane we find the merging of the dense and the etheric forces. This is consummated upon the Path of Purification.

2. Upon the astral plane there must come the resolution of the pairs of opposites. This is consummated upon the Path of Discipleship.

3. Upon the mental plane the Angel of the Presence and the Dweller on the Threshold are brought face to face. Their synthesis is brought about upon the Path of Initiation.

What is true of man in this connection is true also of humanity as a whole, of the planetary Logos of the Earth, as of all planetary Logoi, and of a solar Logos. The analogy between the fusion of the pairs of opposites, for instance, upon the physical plane can be seen in the conscious and directed fusion of the planetary forces with the energy of any specific planet or group of planets. The analogy, involving discrimination to regulate and offset the force of the pairs of opposites upon the astral plane, can be seen when the energies of the sun sign and of the planets are perfectly directed and adjusted. The analogy can also be carried forward onto the mental plane and when the energies of the sun sign and the rising sign are coherently blended and expressed (in the case of both the individual or a planetary Life) there comes a point of crisis wherein the soul and the personality are brought face to face. The Angel of the Presence, distributing solar fire and holding focussed electric fire, and the Dweller on the Threshold, expressing and utilising fire by friction, know each other "with intimate occult knowledge." The door then stands open wide through which the life and light of the three major constellations can—after the third initiation—be occultly available to the initiate, be he a liberated human being or a planetary Logos.

When astrologers understand the true significance of the constellation Gemini, the Twins, and the dual forces which pour through this sign (the "forces in conflict" as they are sometimes called or "the quarrelling brothers") [Page 56] and beat upon our planetary life, then the true method of resolving the dualities will be known...

To Be Continued in the next Full Moon report of Sagittarius.

To be considered below as closing for this Full Moon Addendum of Scorpio.

...Again and repeatedly, students must remind themselves that we are considering the impact of energy upon energy units (all qualified and producing appearance) and with the response of those energy units to the streams of force which reach them from "the furthest center." It is in the development of response to distant points of contact and emanating sources of energy that the needed sensitivity is produced. Sensitivity, generally speaking, is of a threefold nature:

1. Sensitivity to that which is found within oneself. This, when the consciousness is adequately self-sufficient, opens a door for the entrance of energies coming from the "middle center." I speak in symbols and for those whose knowledge of cosmic location and of points in time and space will enable them to comprehend; to the uninitiate, I simply say, "Respond to soul impact."

2. Sensitivity to that which emanates from the "centers left behind" or to those streams of vital energy which lie active and focused below the threshold of the waking consciousness. They stir the threads of memory; they draw backward the glances (and there lies magic in the energy of the eye) of the onward moving Point, the Pilgrim on his way; they condition through ancient habit the responsiveness of the units in the form.

3. A developed sensitivity which emerges from the "furthest center" at first unconsciously employed and later consciously directed and attuned - a fully magnetic and attractive sensitivity. Forget not that true interplay imposes the condition of reciprocity and that the two points or termini of a line eventually vibrate in unison.

The Rays pour through, are expressed by and are transmitted through the following constellations:

Ray I	Aries	Leo	Capricorn
Ray II	Gemini	Virgo	Pisces
Ray III	Cancer	Libra	Capricorn
Ray IV	Taurus	Scorpio	Sagittarius
Ray V	Leo	Sagittarius	Aquarius
Ray VI	Virgo	Sagittarius	Pisces
Ray VII	Aries	Cancer	Capricorn

Conclusion (at this point):

May we consider together entering into that higher state of (group/soul) 'bewilderment', especially at this cycle of Aquarian consciousness, yet strength and unity from our lower state of personal certitude and isolation to possibly obtain a universal group consciousness.